



Over look



Back



Side



Paddle Wheel



## Paddle Steamer (Sidewheeler)

A paddle steamer is a boat with paddle wheels on the sides that are turned by a steam engine, propelling the boat forward. A paddle steamer on the ocean or a river is quite an impressive site, with its paddle wheels turning away and black smoke puffing out of its large chimney. In the old days, boats needed people to make them move through the water, or sails, which require technical operation, but in the latter half of the 18th century when the steam engine was utilized, the paddle steamer was developed. In the mid-19th century, with the improvement of the steam engine, and utilization of the screw propeller, the number of paddle steamers being produced began to drop. There are two types of paddle steamers: sidewheelers, which have paddle wheels on both sides, and sternwheelers, which have a single wheel at the back. This paper craft model is based on the sidewheeler type.

Completed Model (Total length) About 410mm  
(Total width) About 130mm  
Pattern 21 pages  
Assembly Instructions 10 pages

\*Build the model by carefully reading the Assembly Instructions, in the parts sheet page order.

### Assembly Process

Attach the parts in order.  
A1~T4 No. of Parts

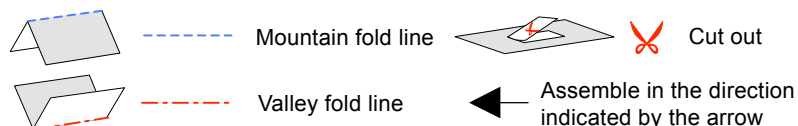
\*Glue, scissors and other tools may be dangerous to young children so be sure to keep them out of the reach of young children.

### Assembly Tip

- Small pieces will be easier to cut out if you fold along the lines first. Cut them out after you have folded them.
- Before gluing each piece, be sure to compare its shape to the corresponding surface to ensure it is the correct piece.

### Folds & Marks

Trace along the folds with a ruler and a used pen (no ink) to get a sharper, easier fold.



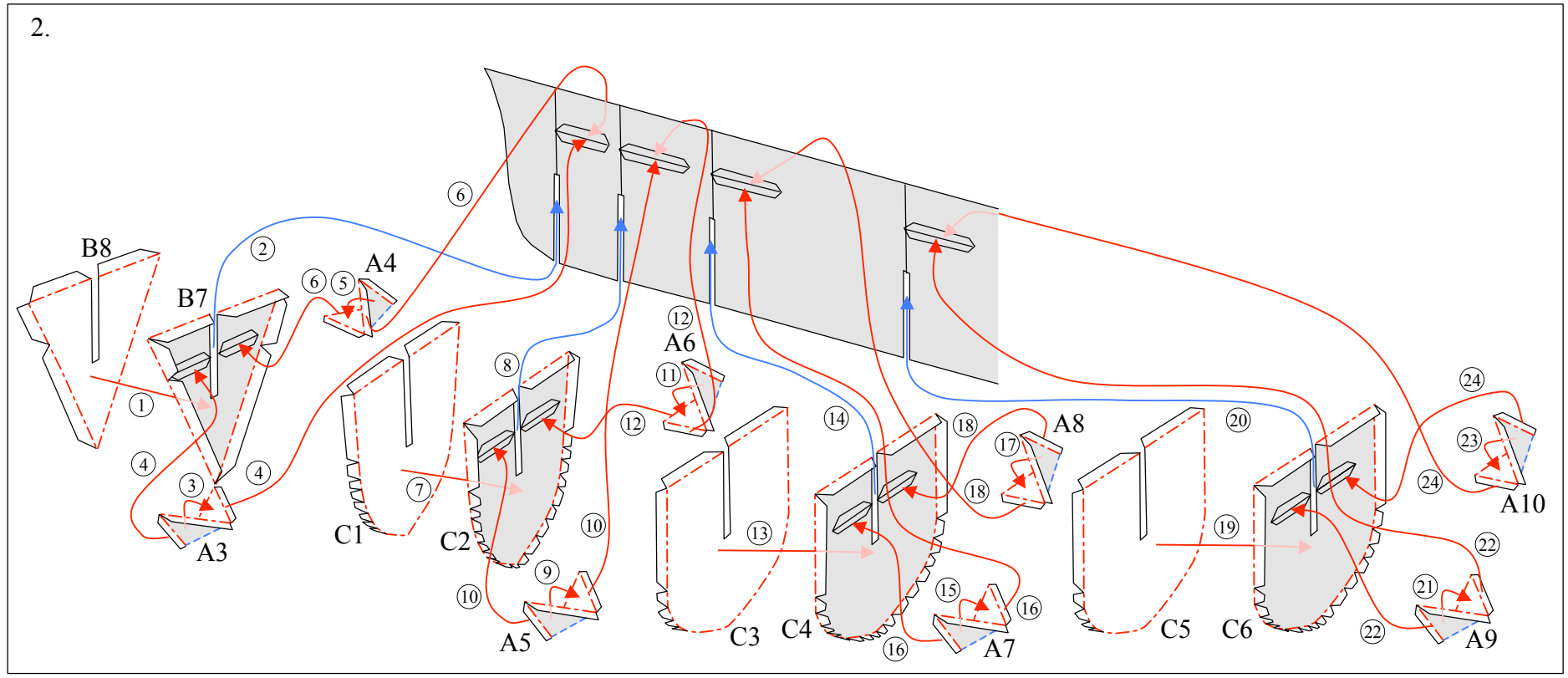
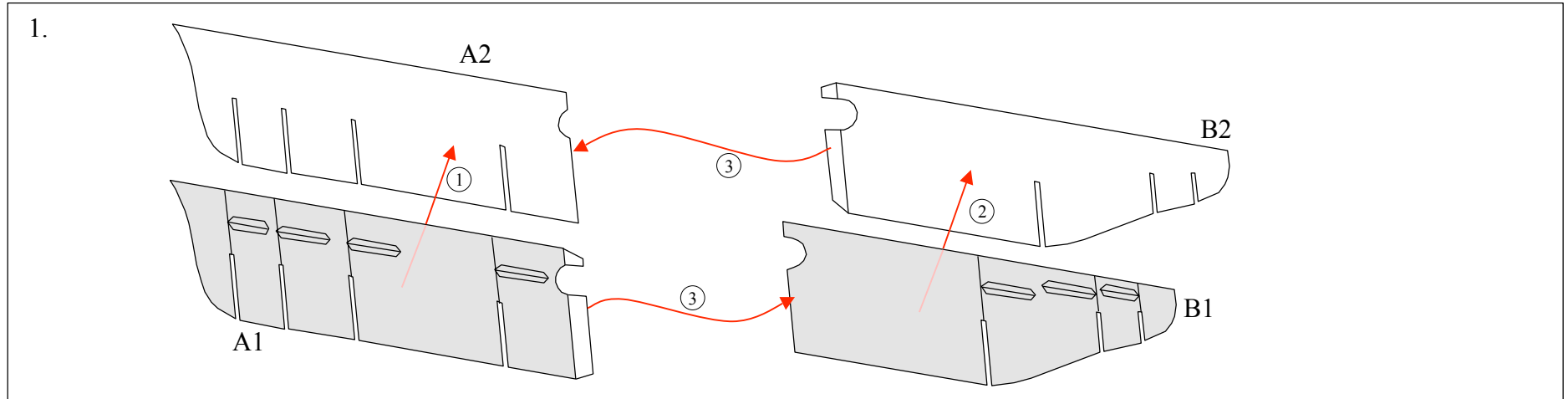
### Glue spot

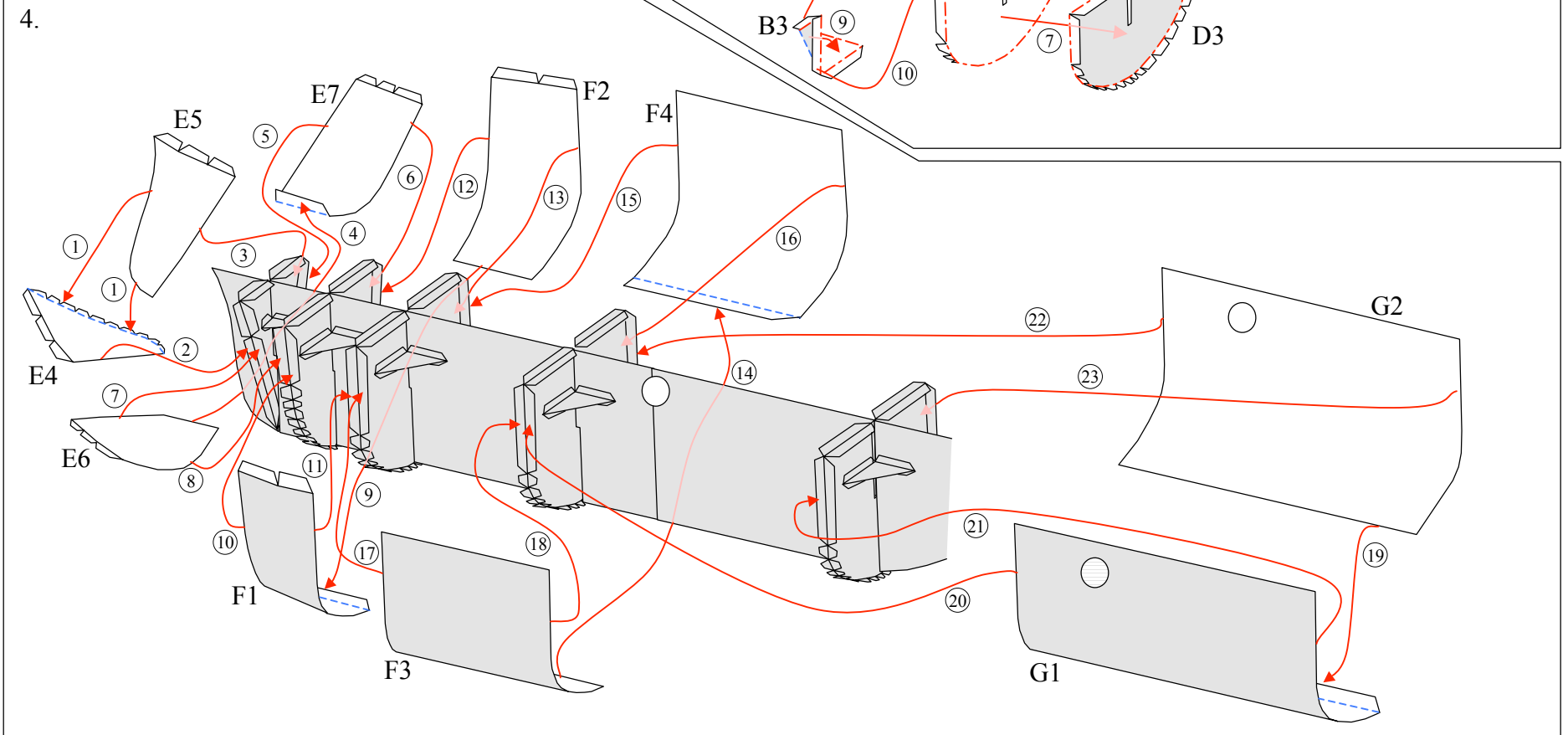
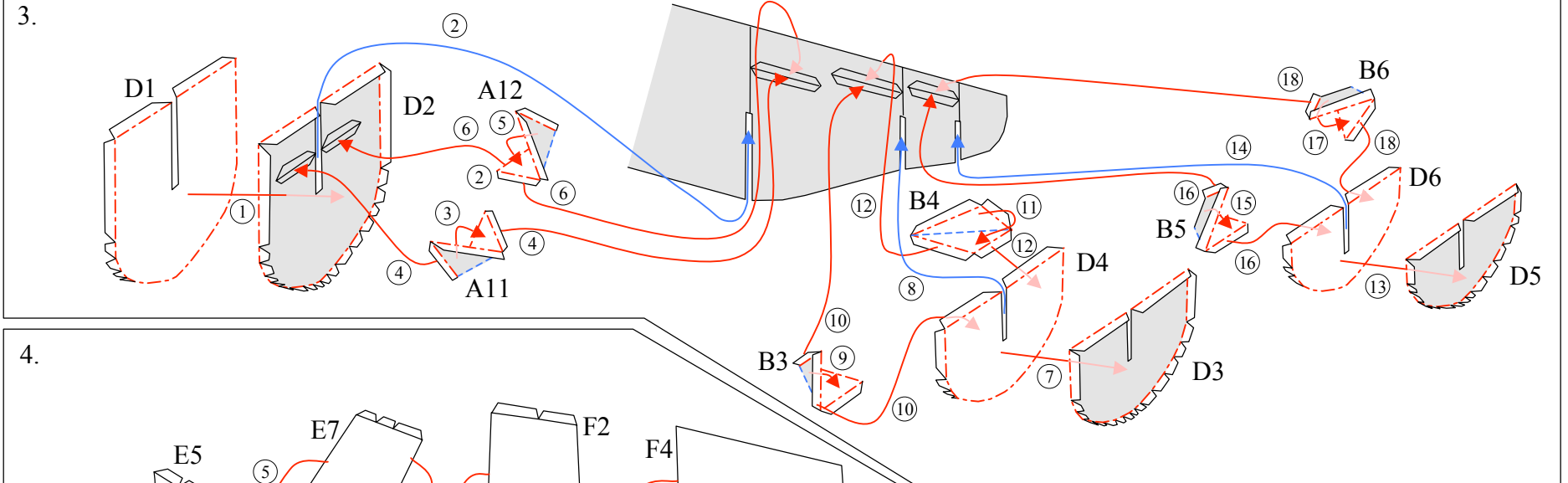
Each glue spot has a mark indicating how to attach it.

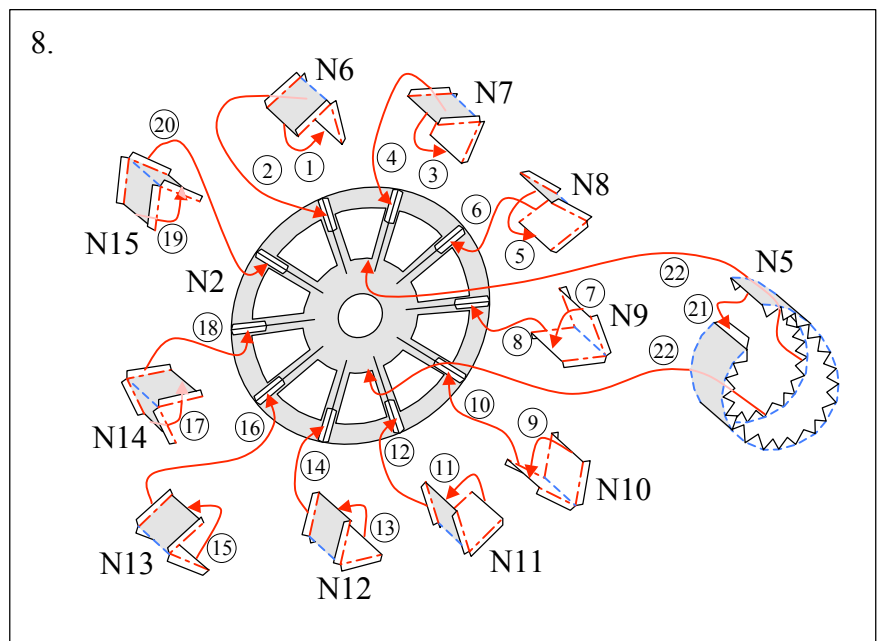
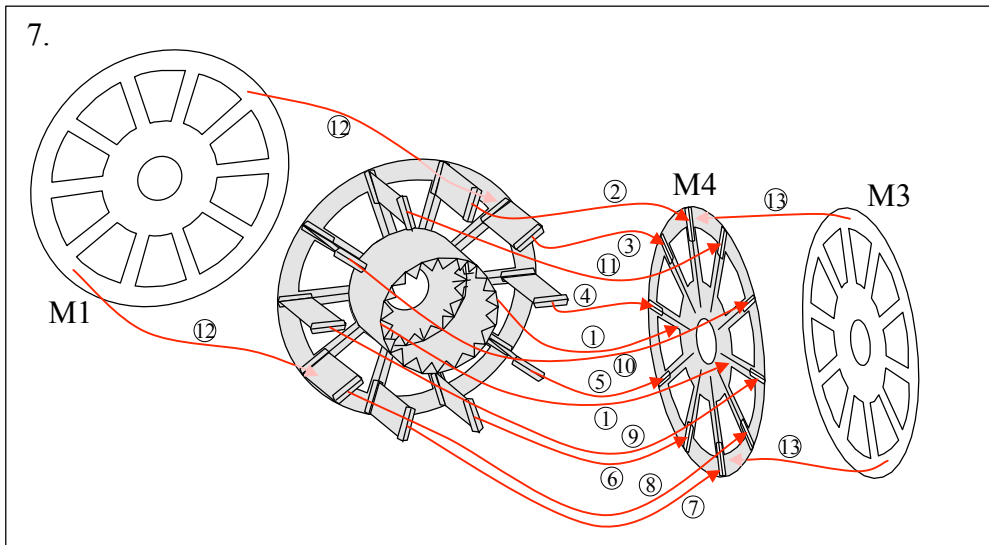
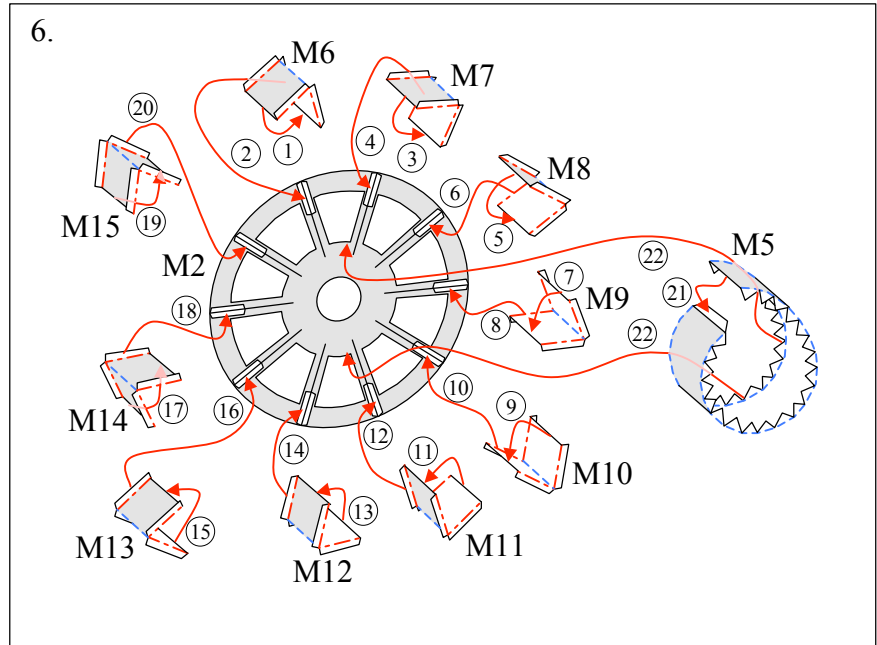
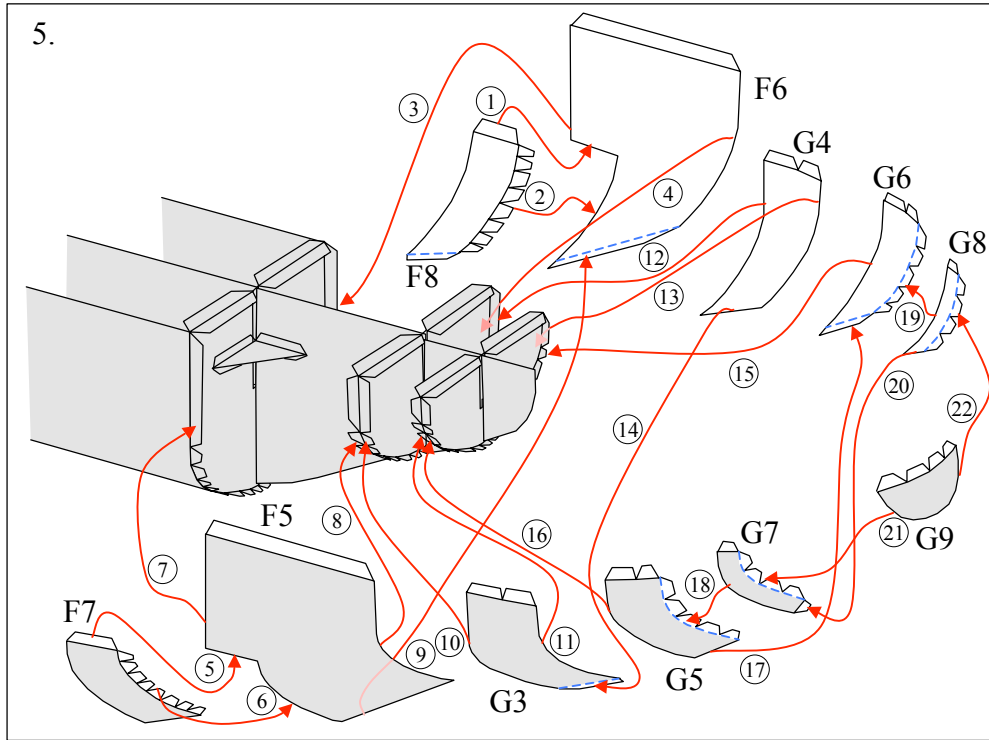
- Yellow circle: Glue to the front of the other part
- Blue circle: Glue to the rear of the other part
- Green triangle: Glue within the same part
- Red square: Glue the rear of this part

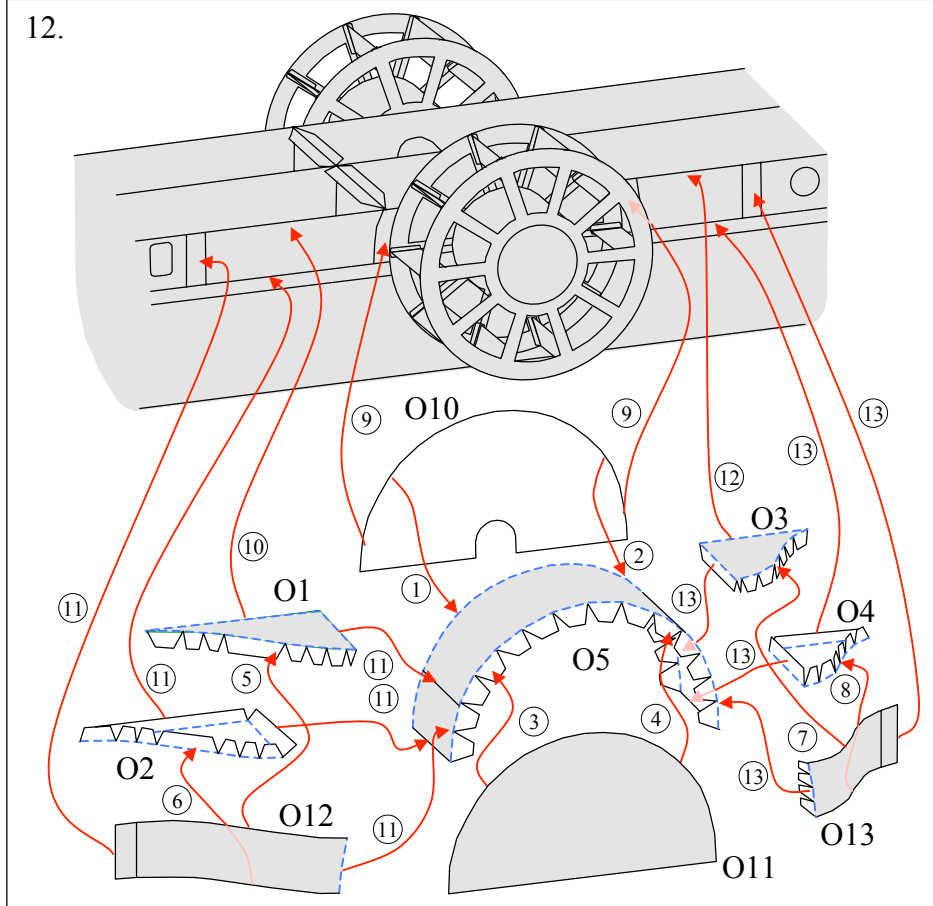
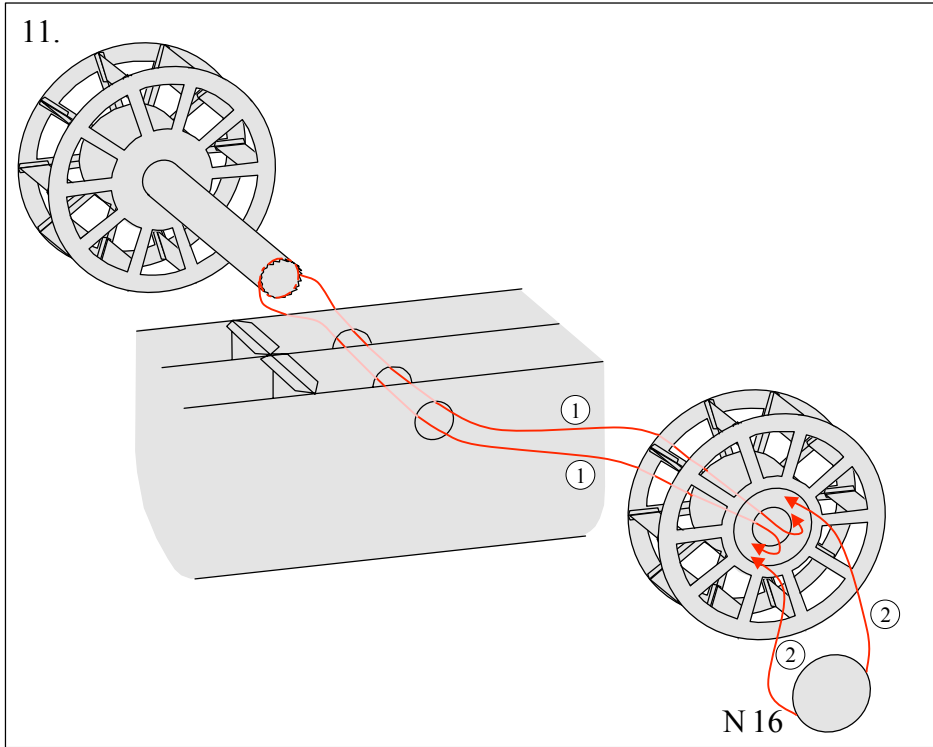
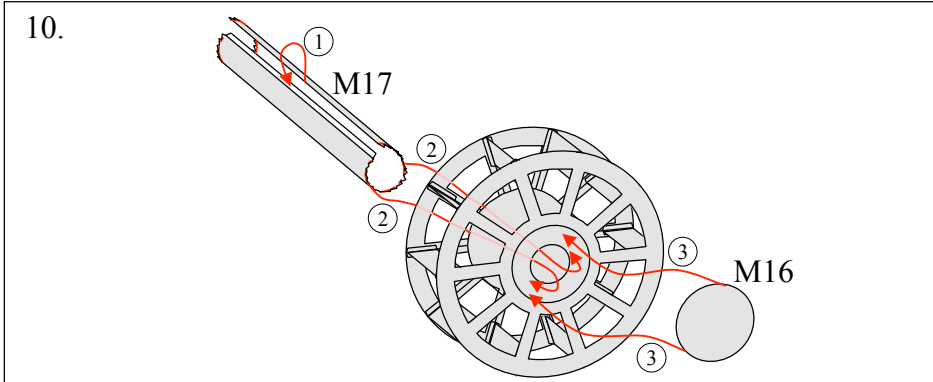
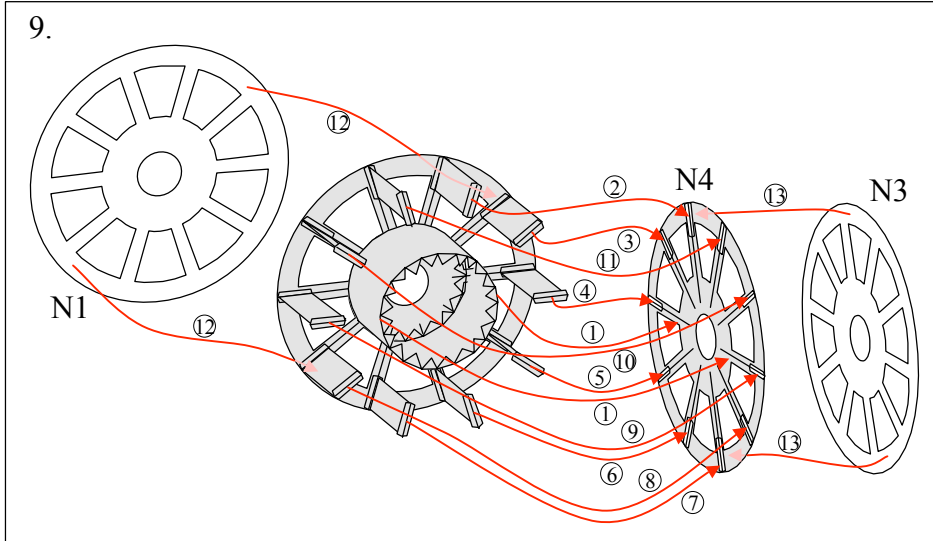
### Tools

Scissors, glue (We recommend craft glue), ruler, tweezers, stencil pen, used pen (no ink).

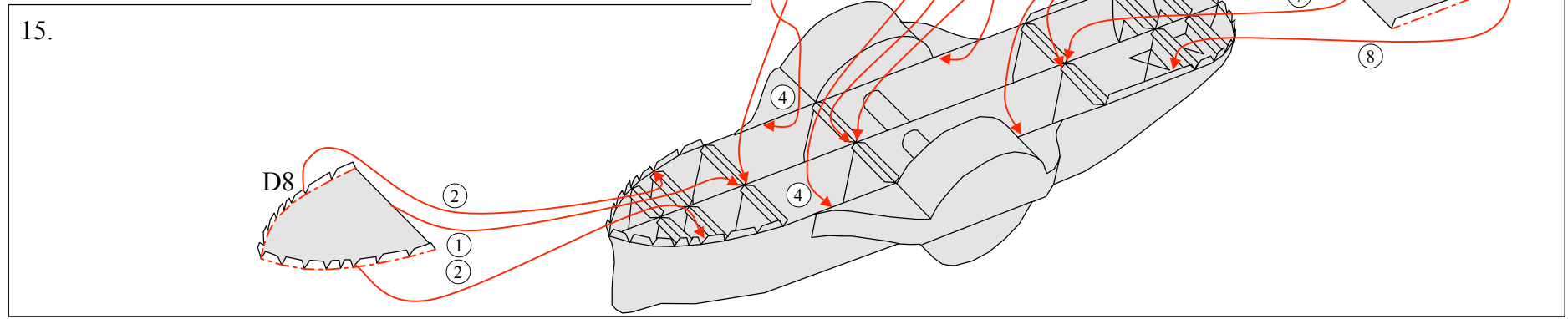
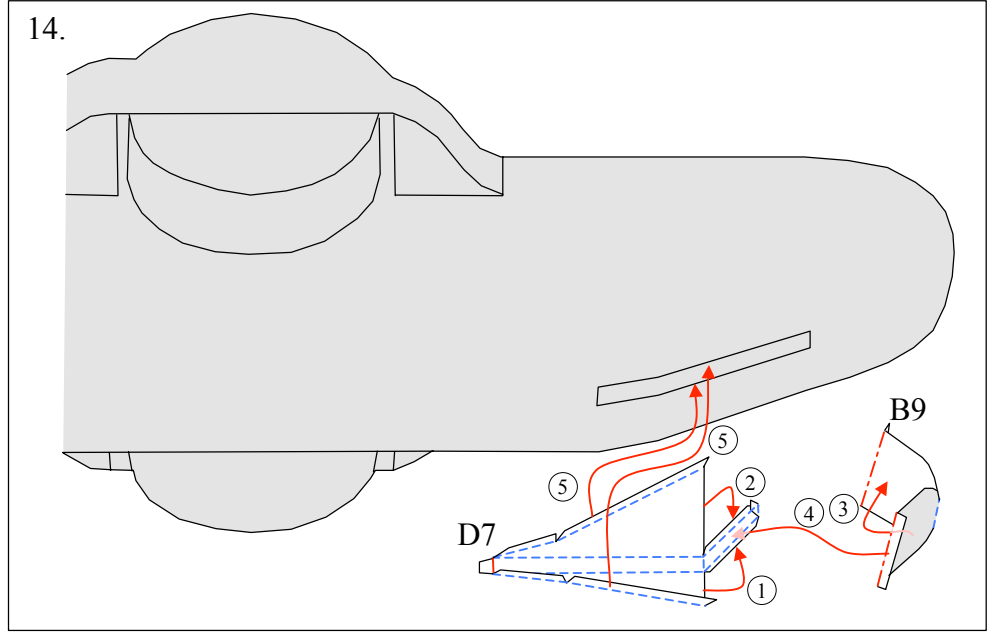
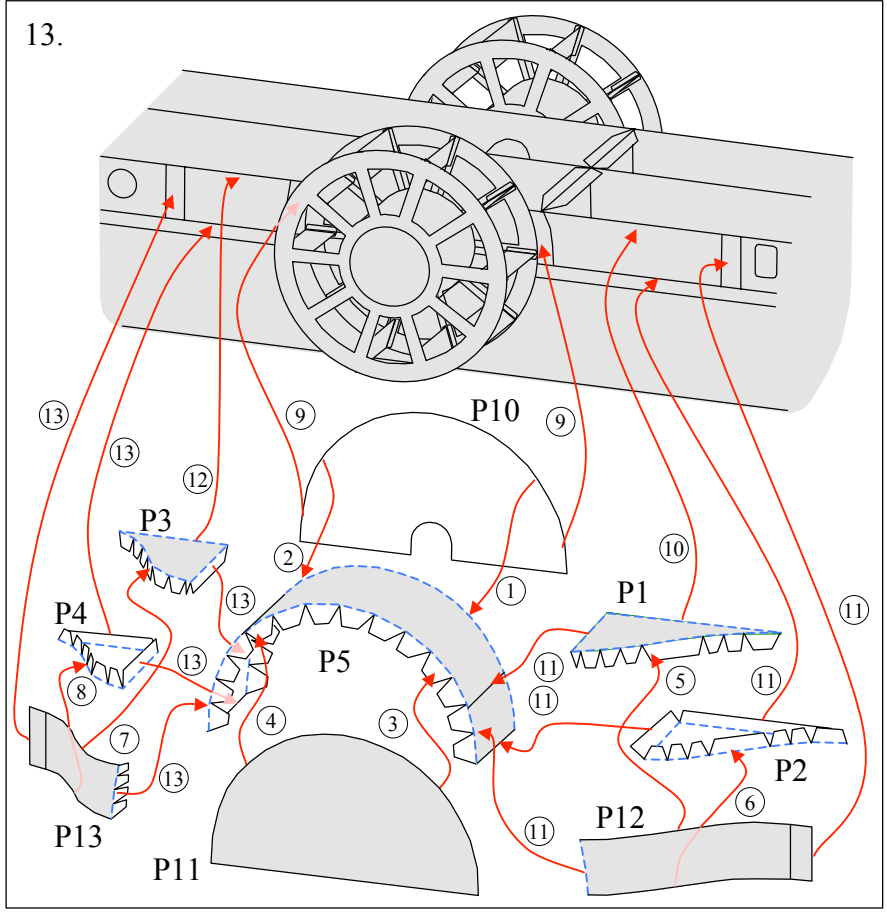


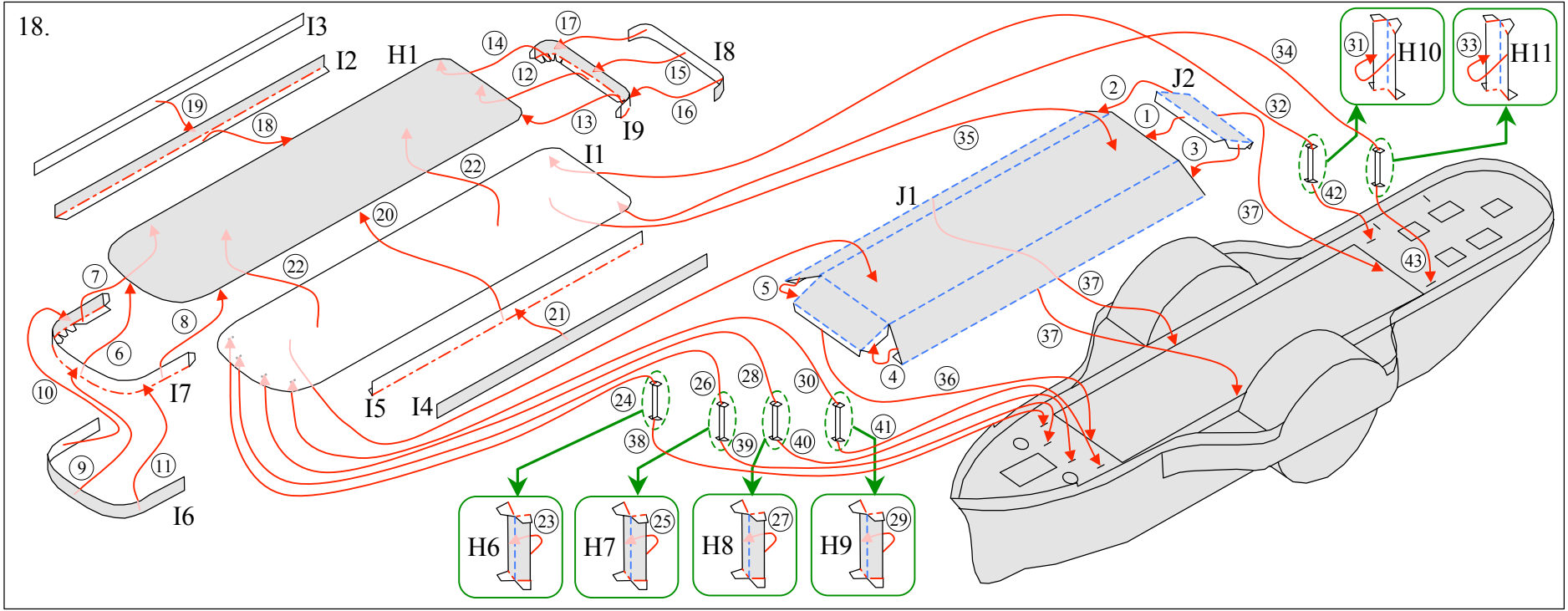
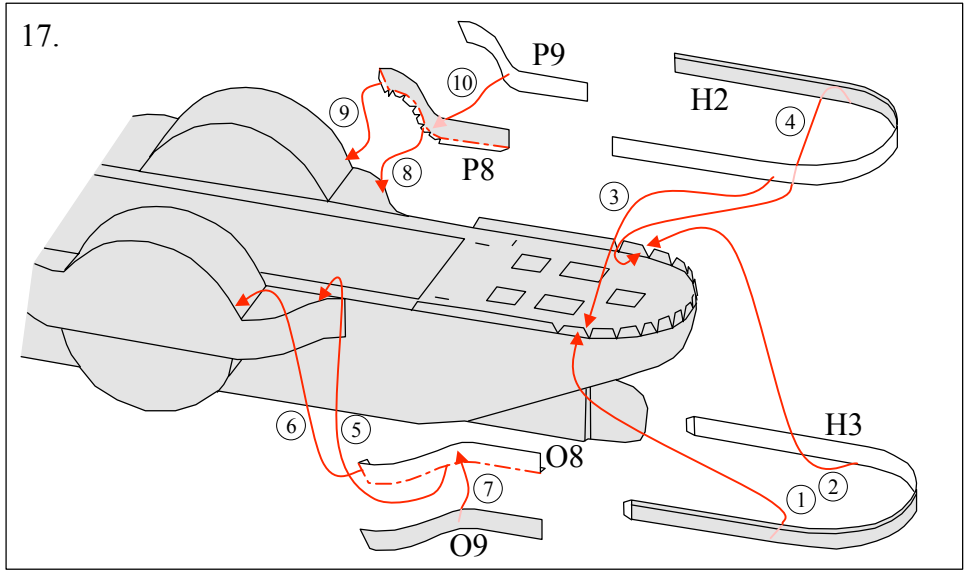
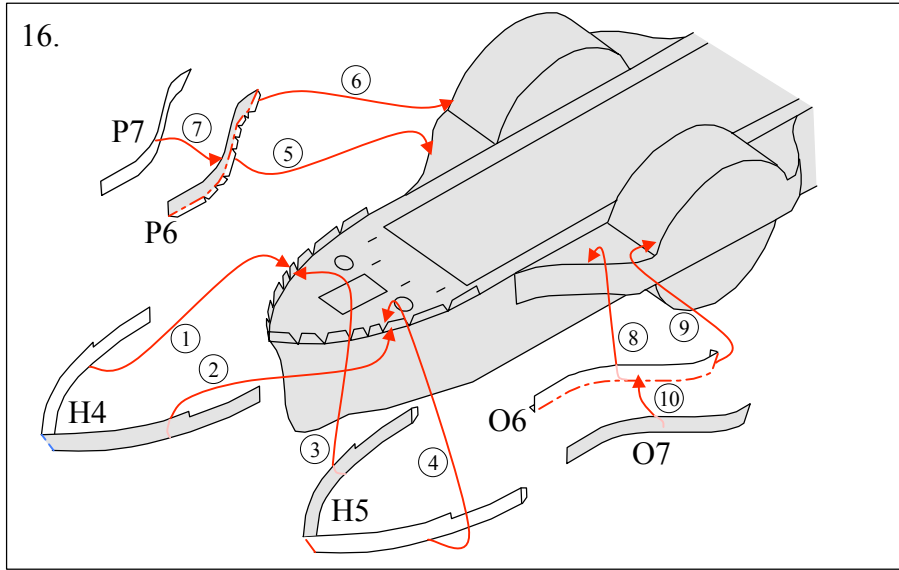


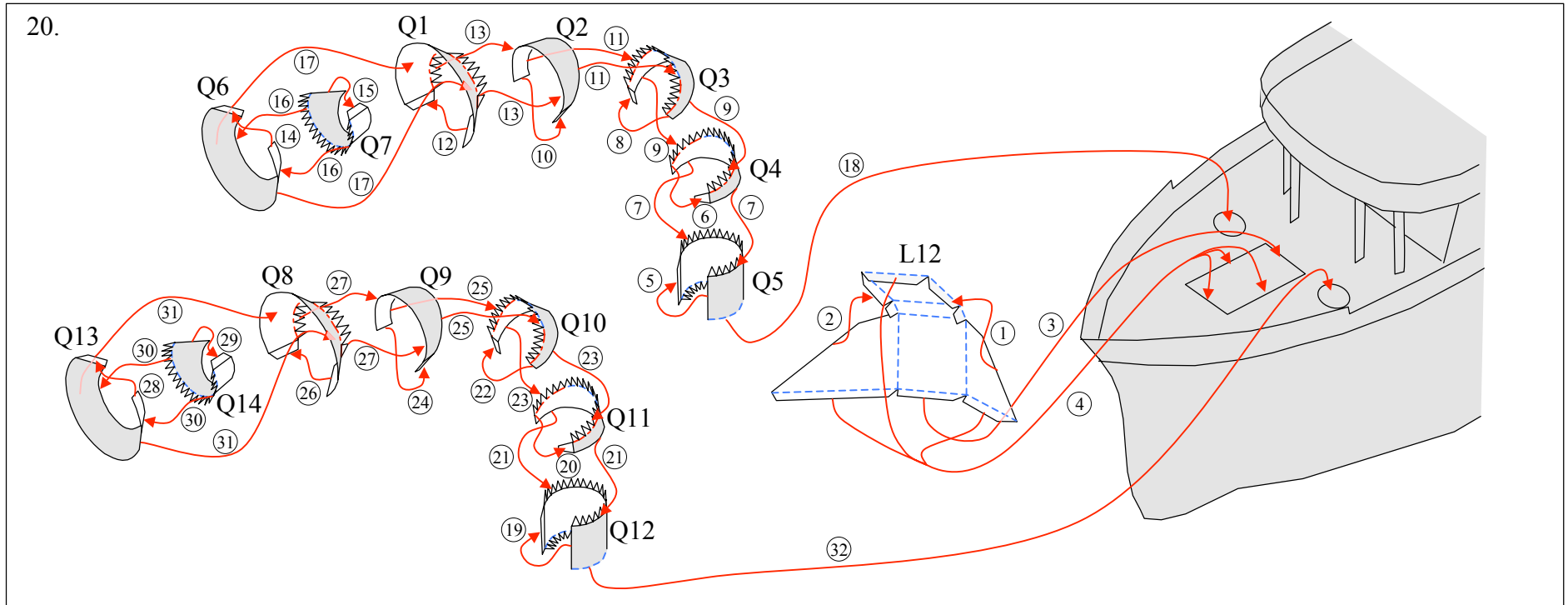
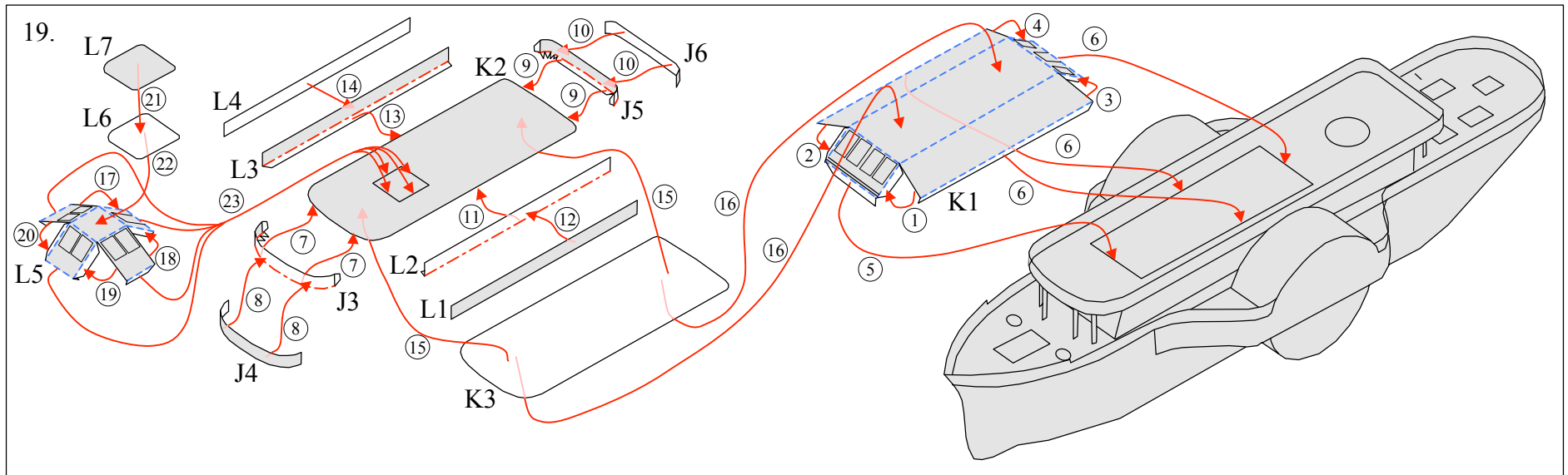




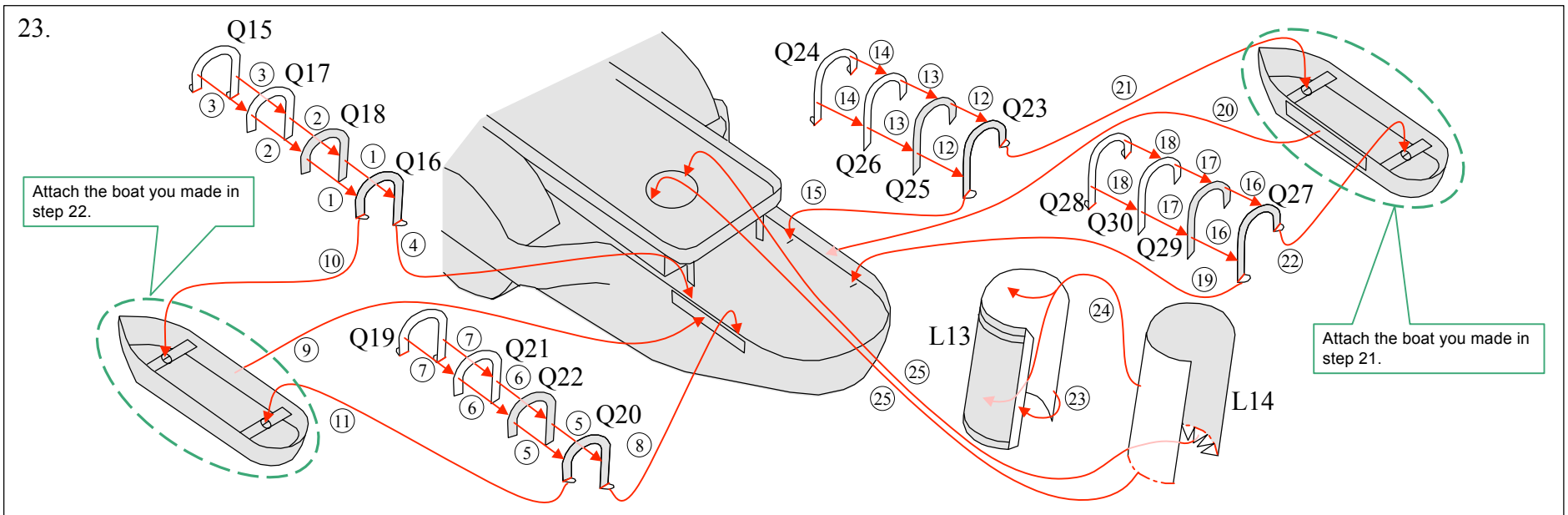
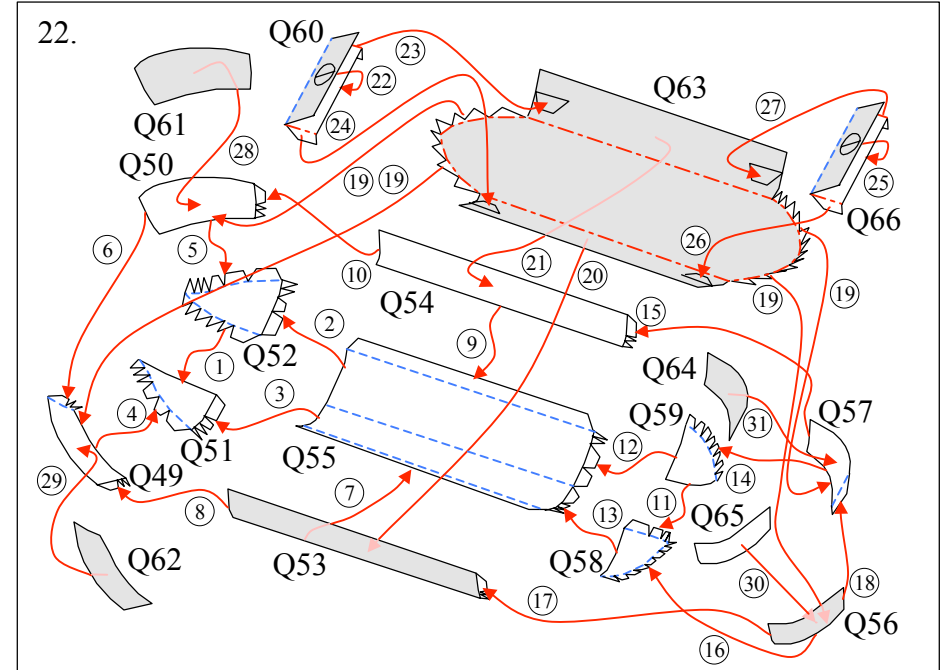
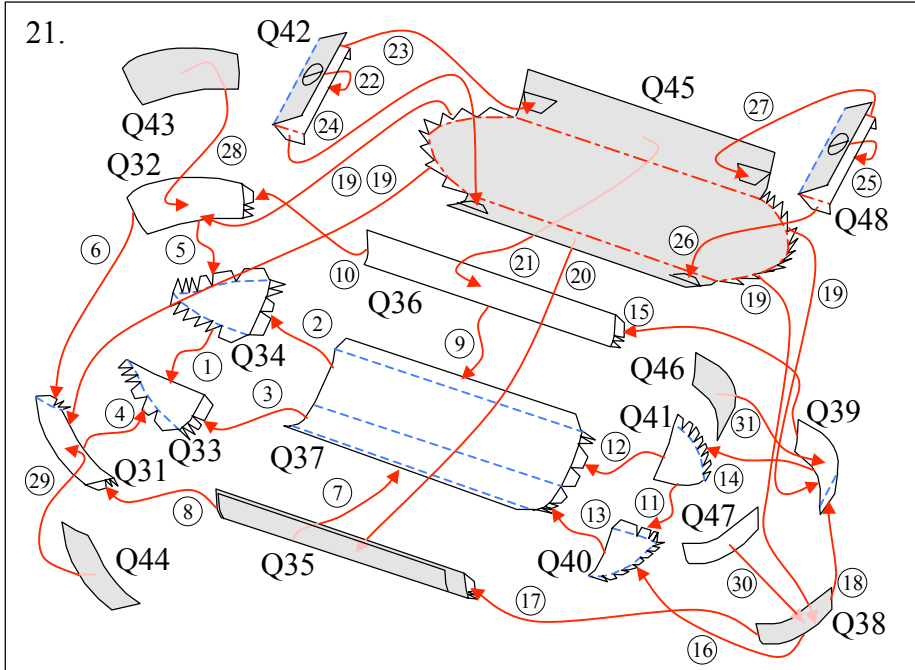




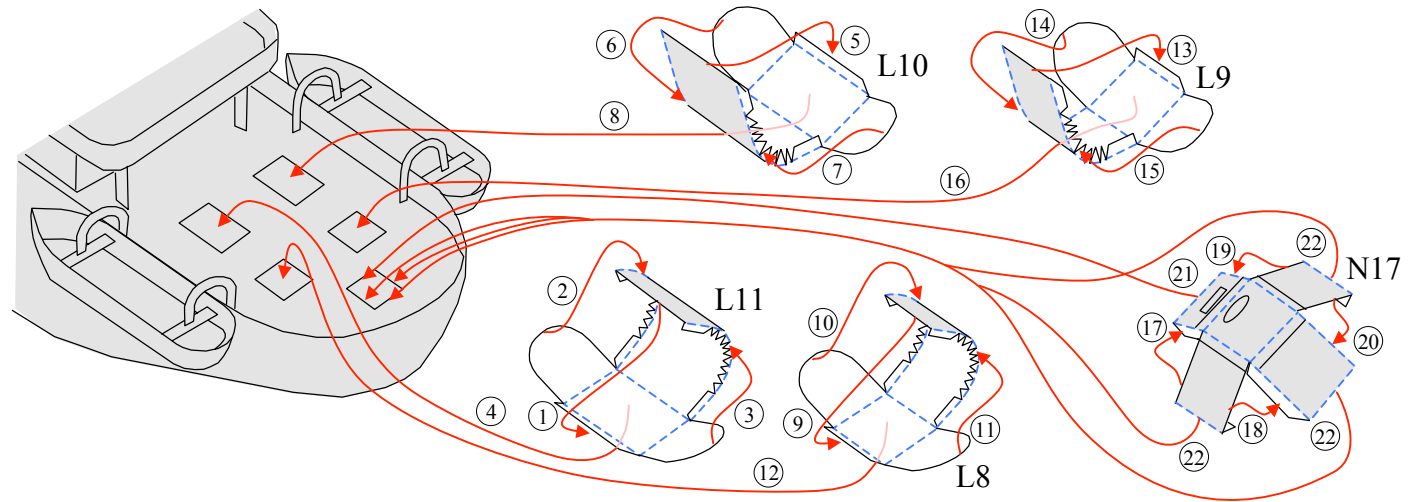




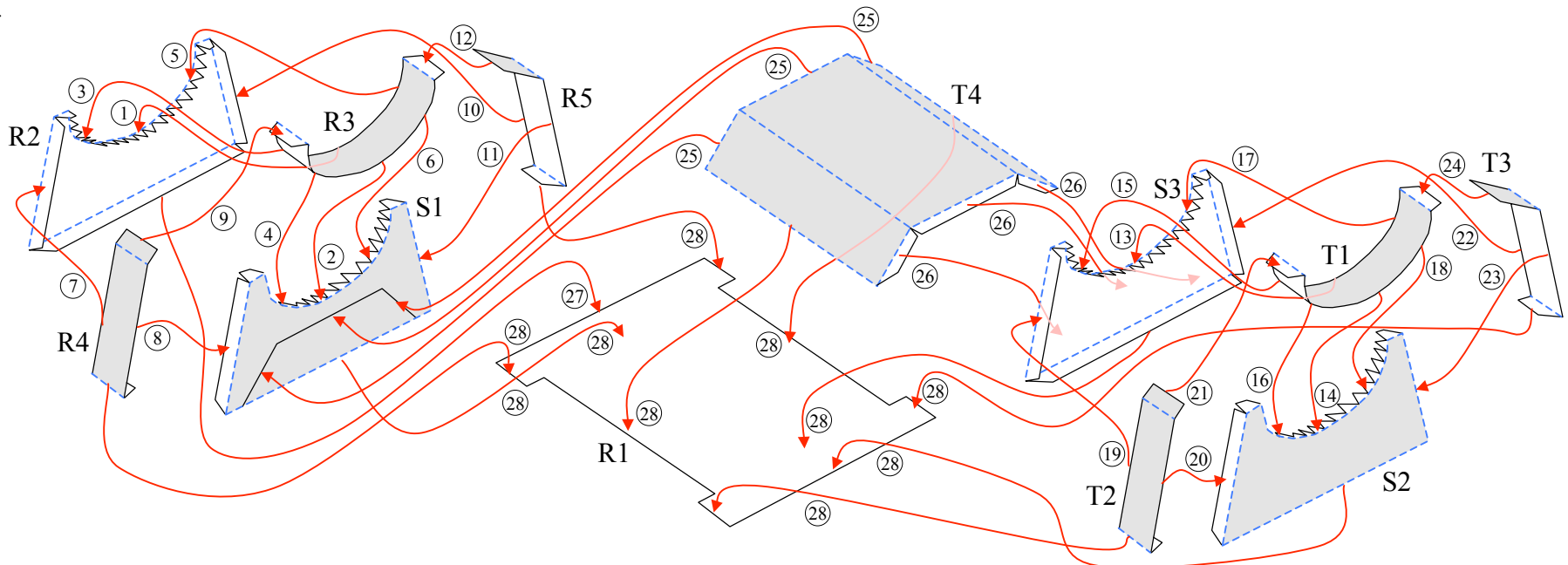


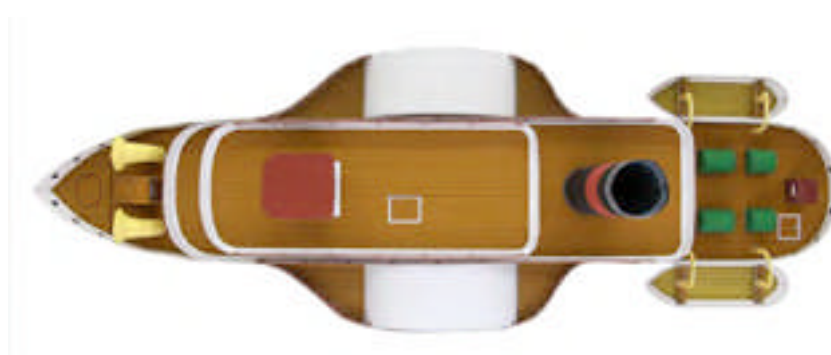


24.



25.





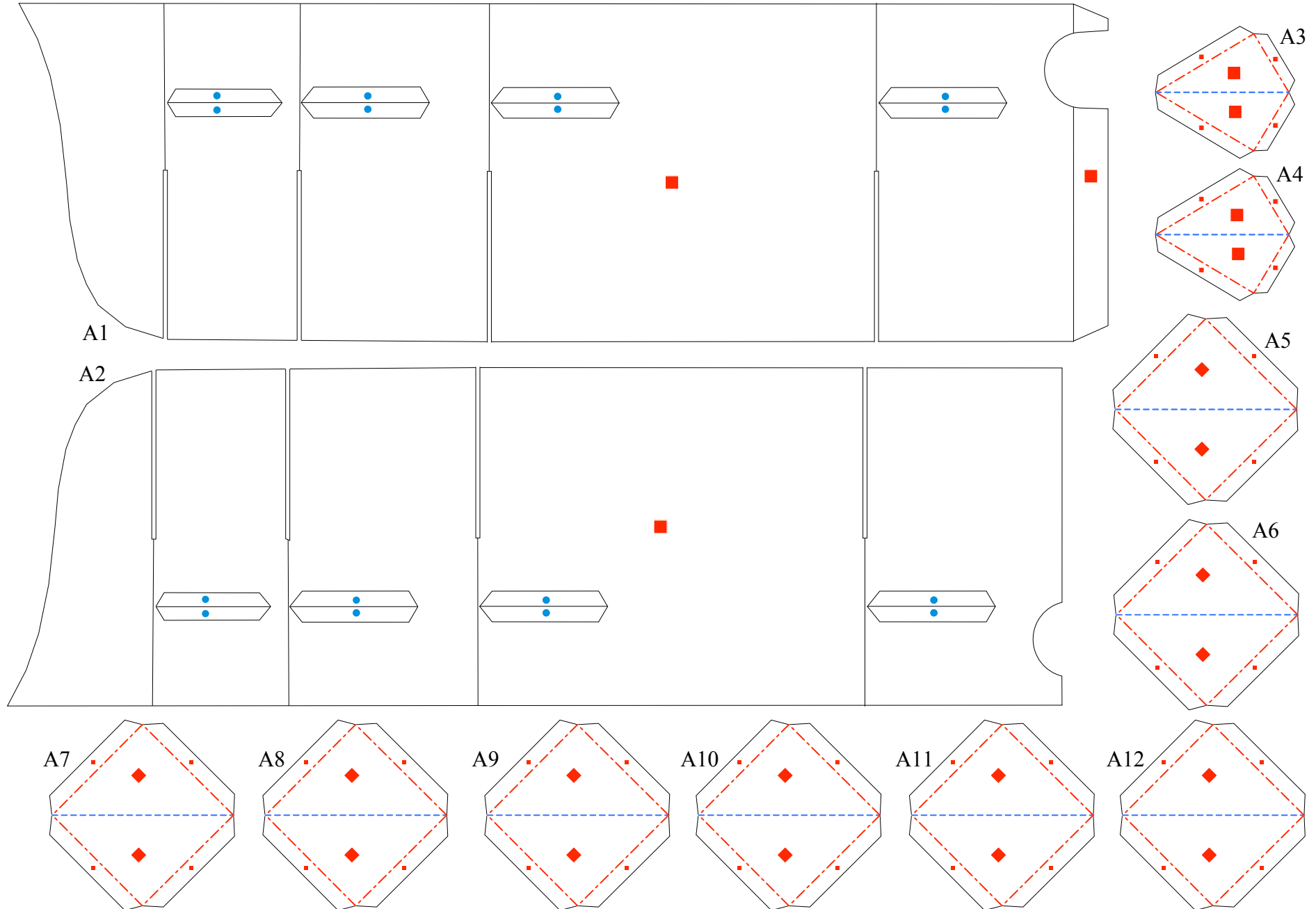
## Paddle Steamer (Sidewheeler)

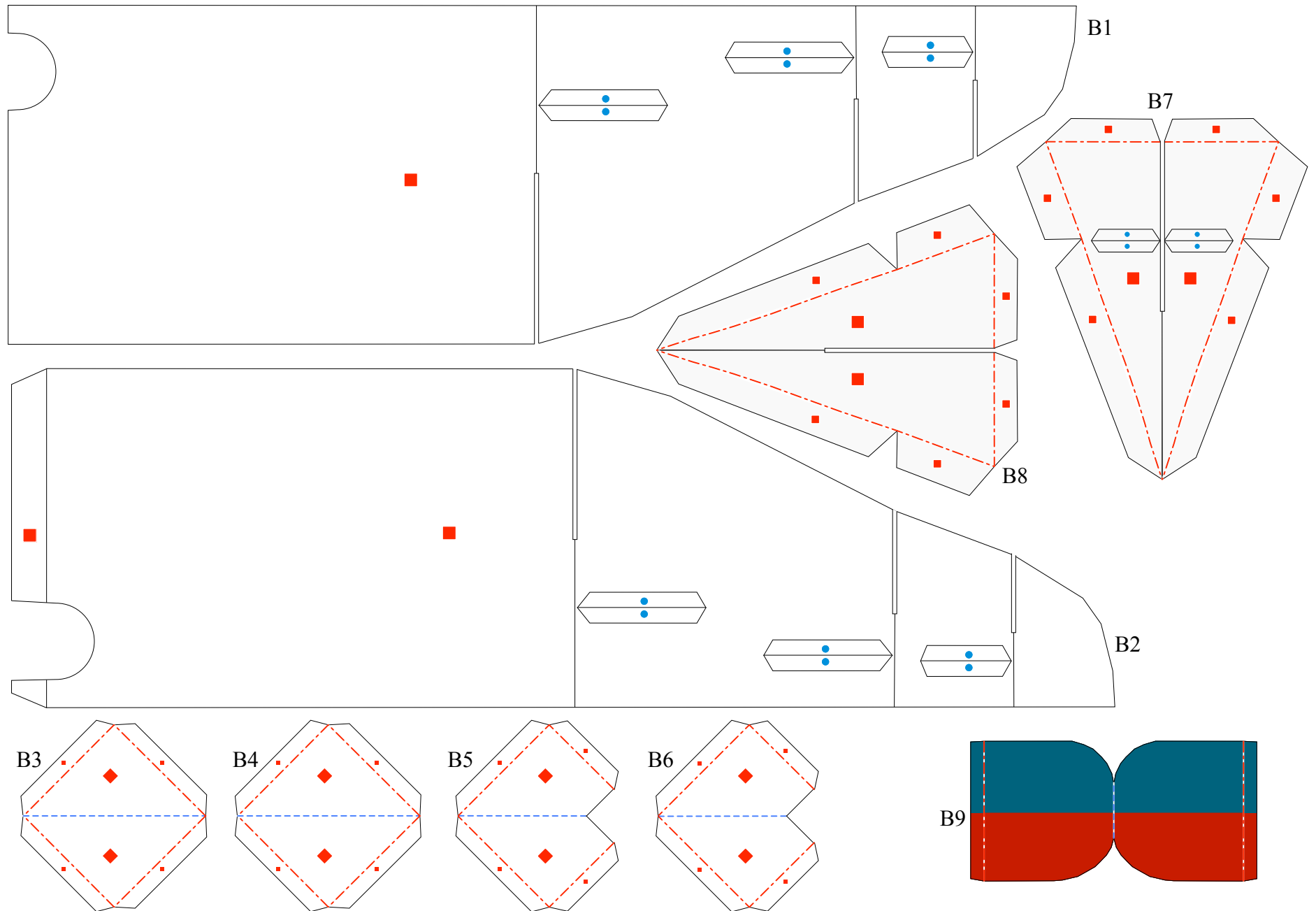
Completed Model (Total length)	About 410mm
(Total width)	About 130mm
Pattern	21 pages
Assembly Instructions	10 pages

A paddle steamer is a boat with paddle wheels on the sides that are turned by a steam engine, propelling the boat forward. A paddle steamer on the ocean or a river is quite an impressive site, with its paddle wheels turning away and black smoke puffing out of its large chimney. In the old days, boats needed people to make them move through the water, or sails, which require technical operation, but in the latter half of the 18th century when the steam engine was utilized, the paddle steamer was developed. In the mid-19th century, with the improvement of the steam engine, and utilization of the screw propeller, the number of paddle steamers being produced began to drop. There are two types of paddle steamers: sidewheelers, which have paddle wheels on both sides, and sternwheelers, which have a single wheel at the back. This paper craft model is based on the sidewheeler type.

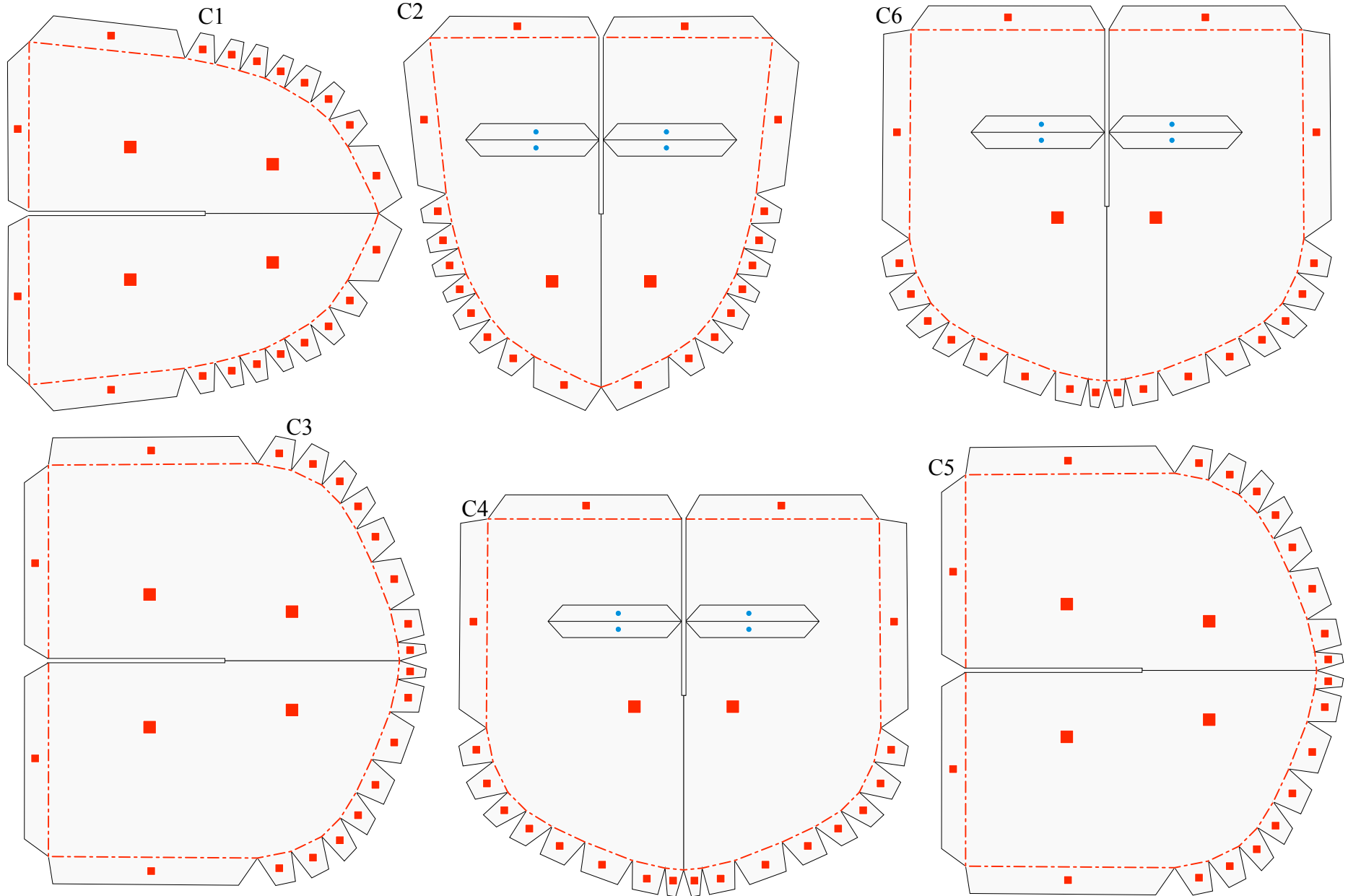
\*Build the model by carefully reading the Assembly Instructions, in the parts sheet page order.

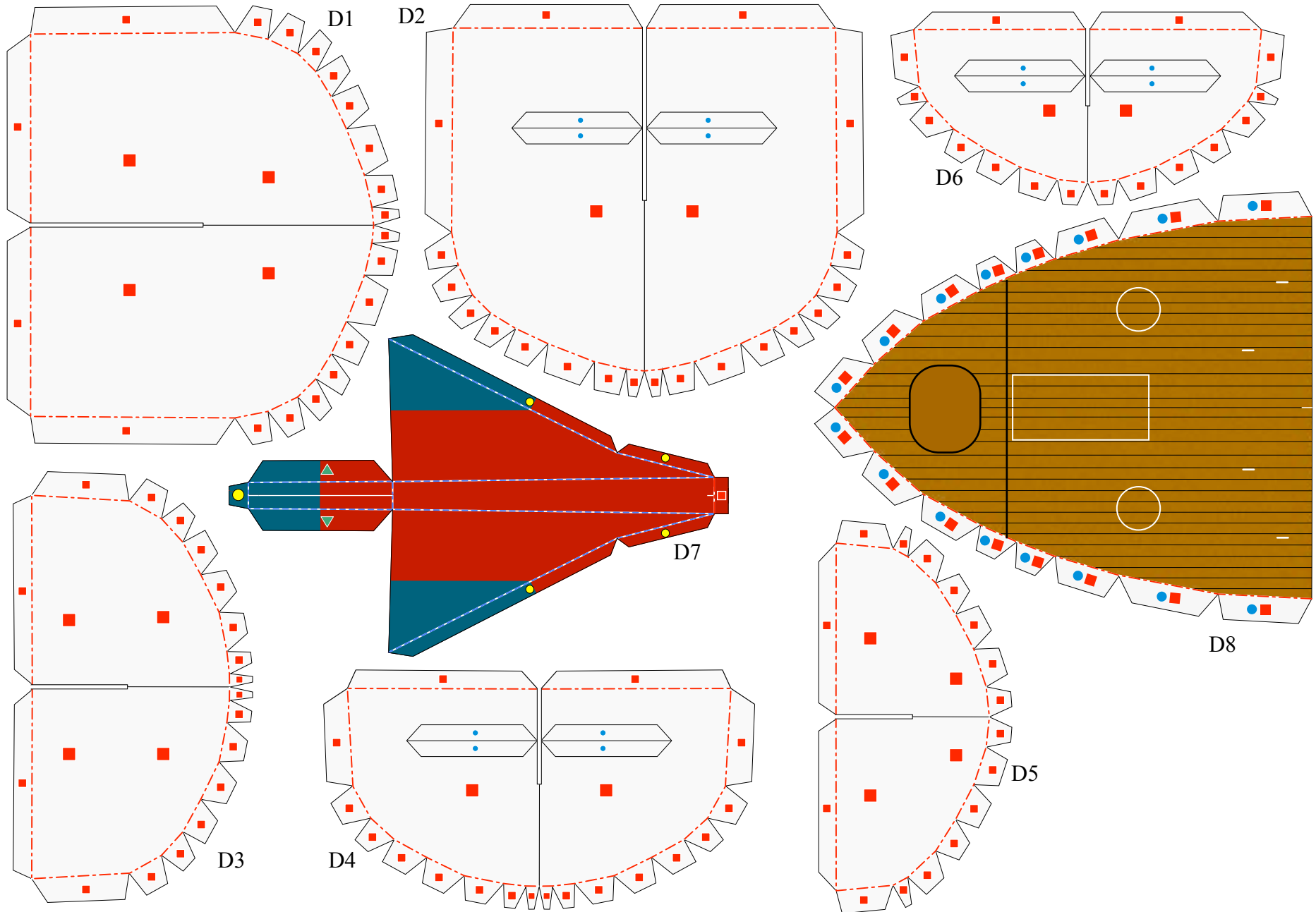


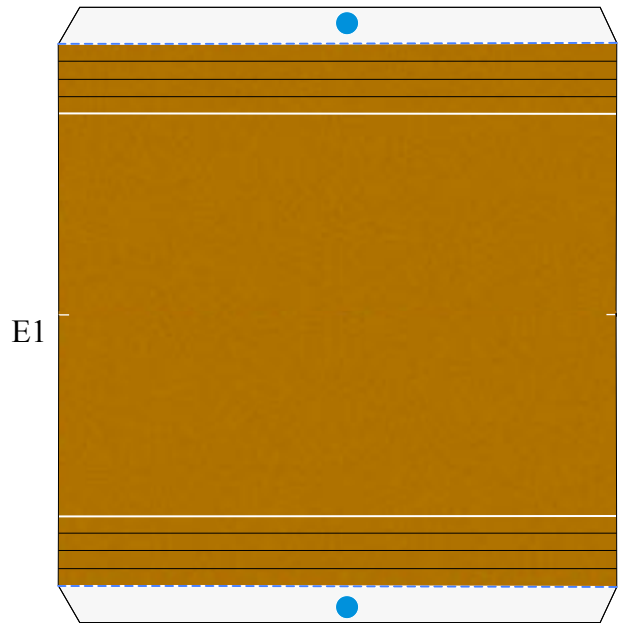




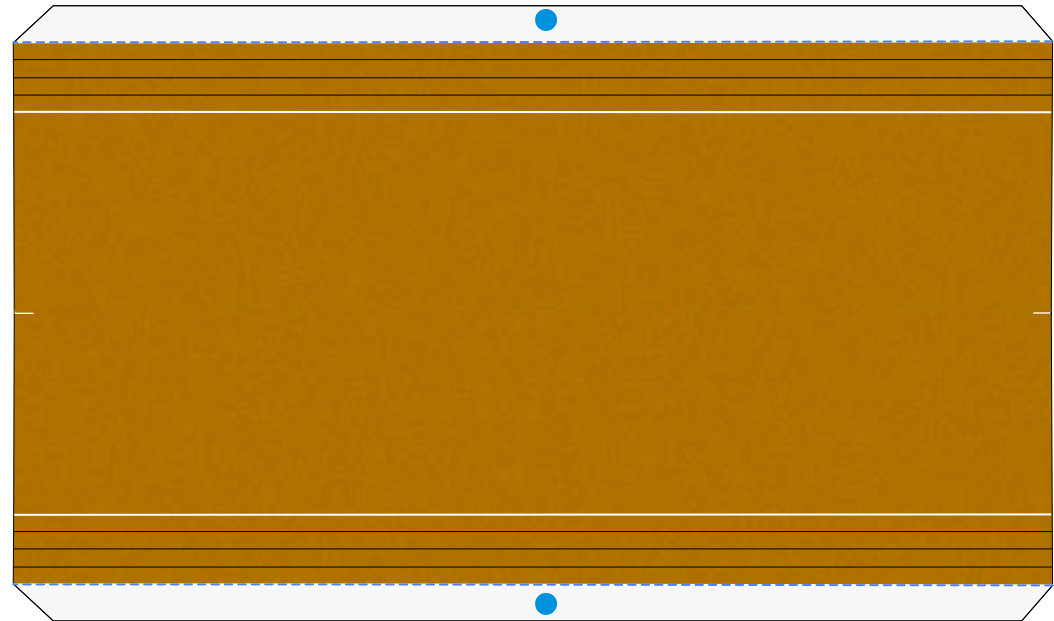




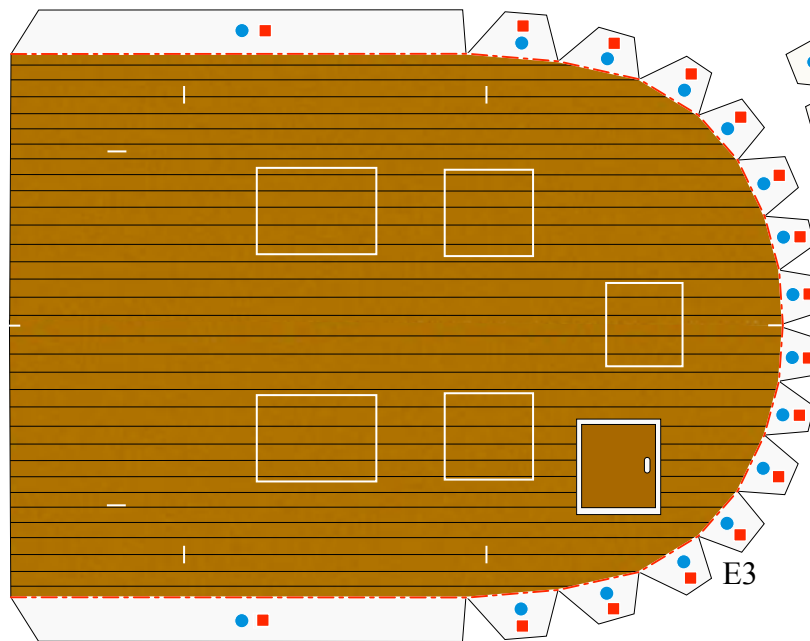




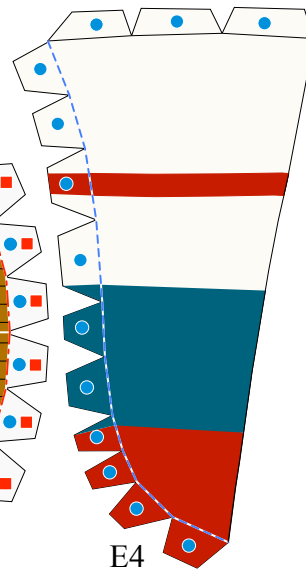
E1



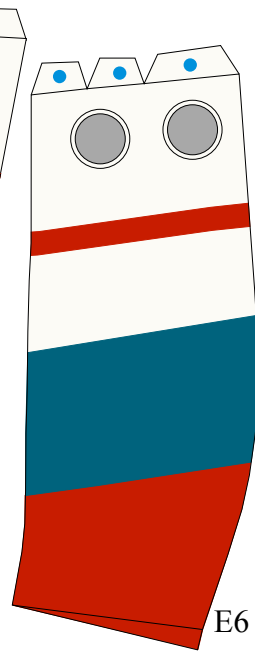
E2



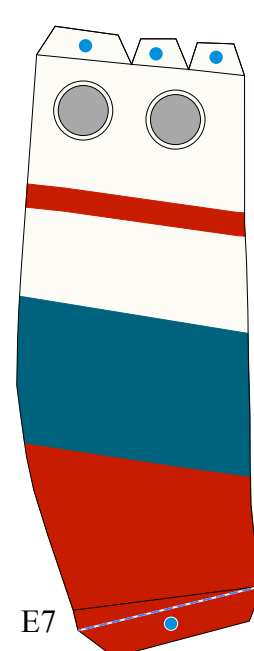
E3



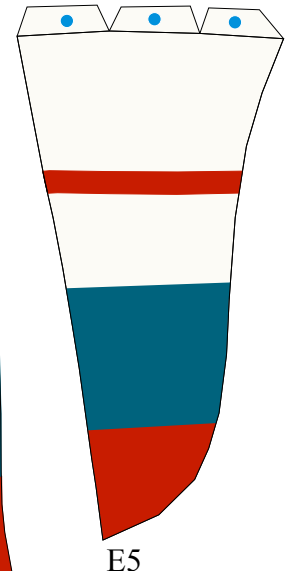
E4



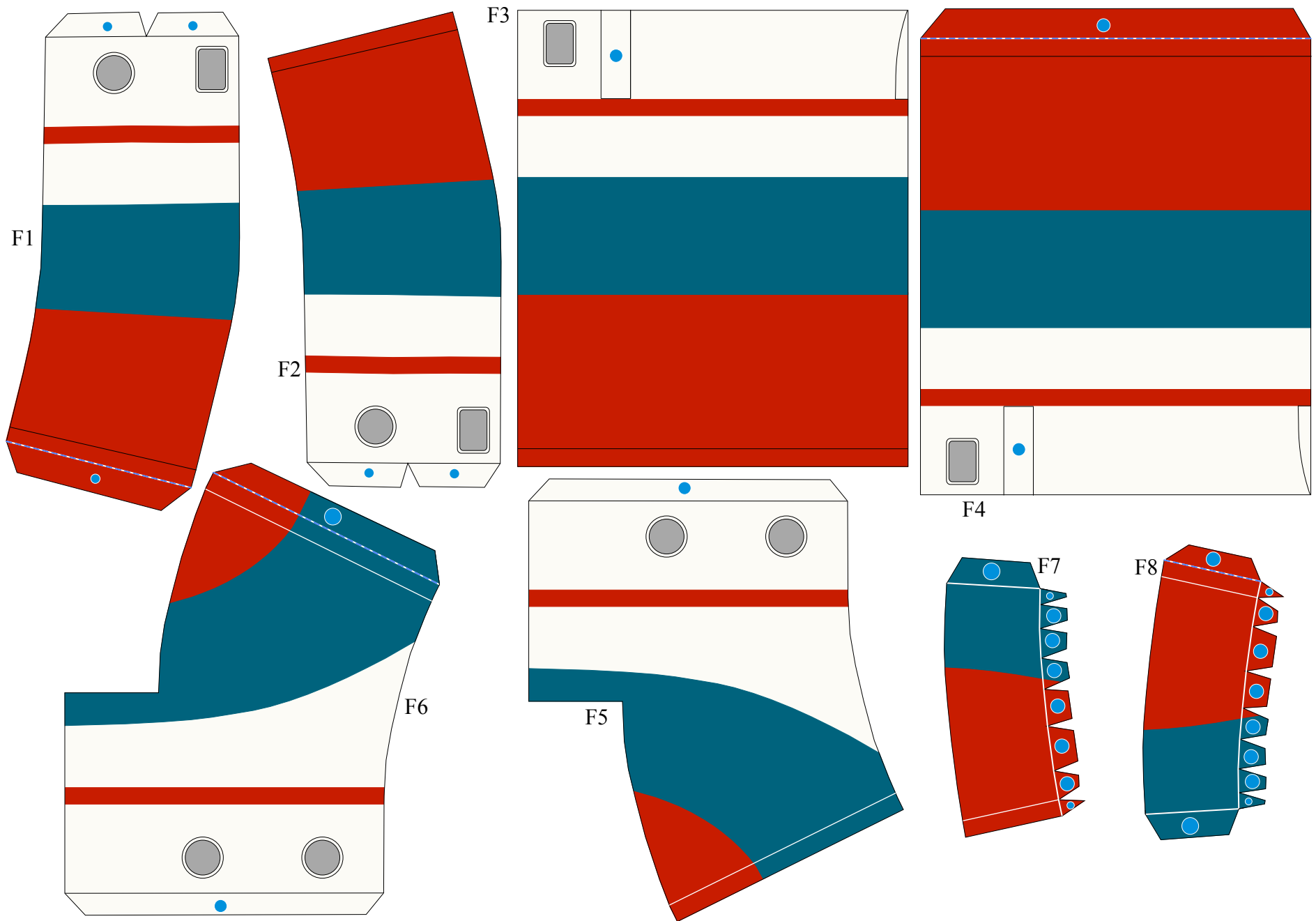
E6



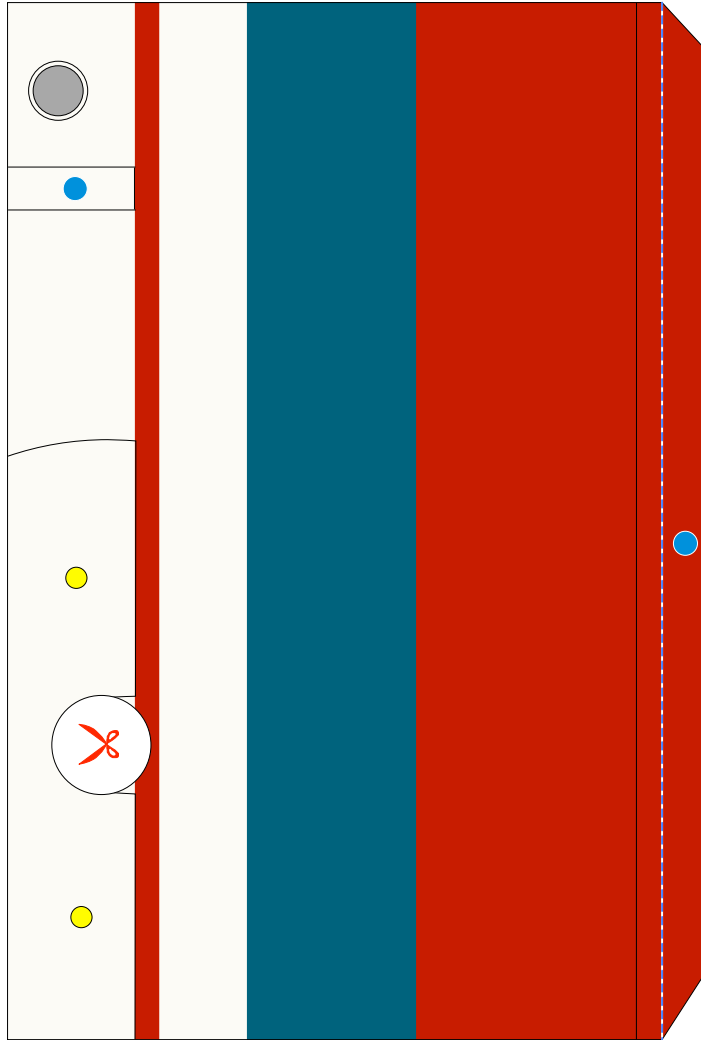
E7



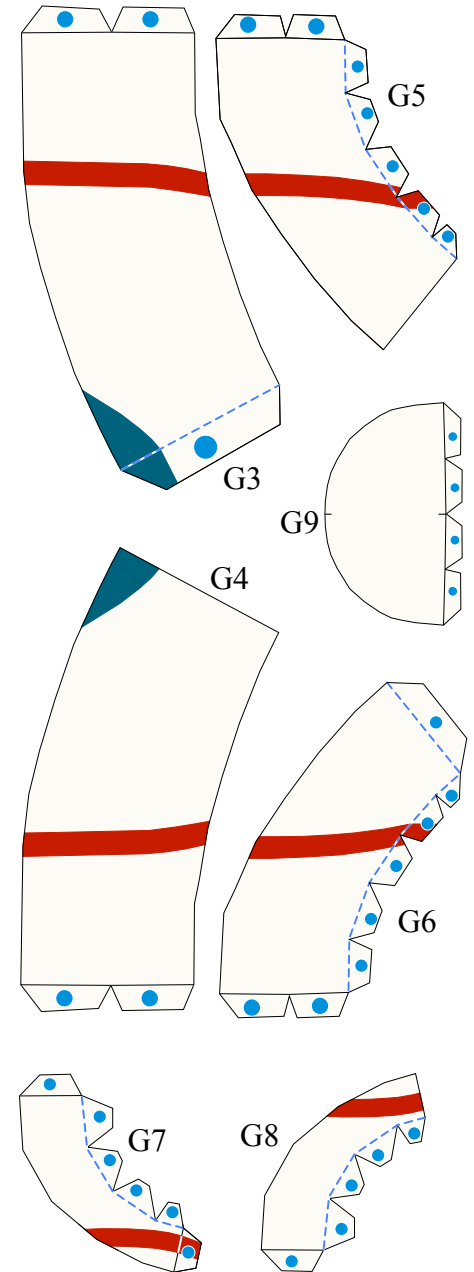
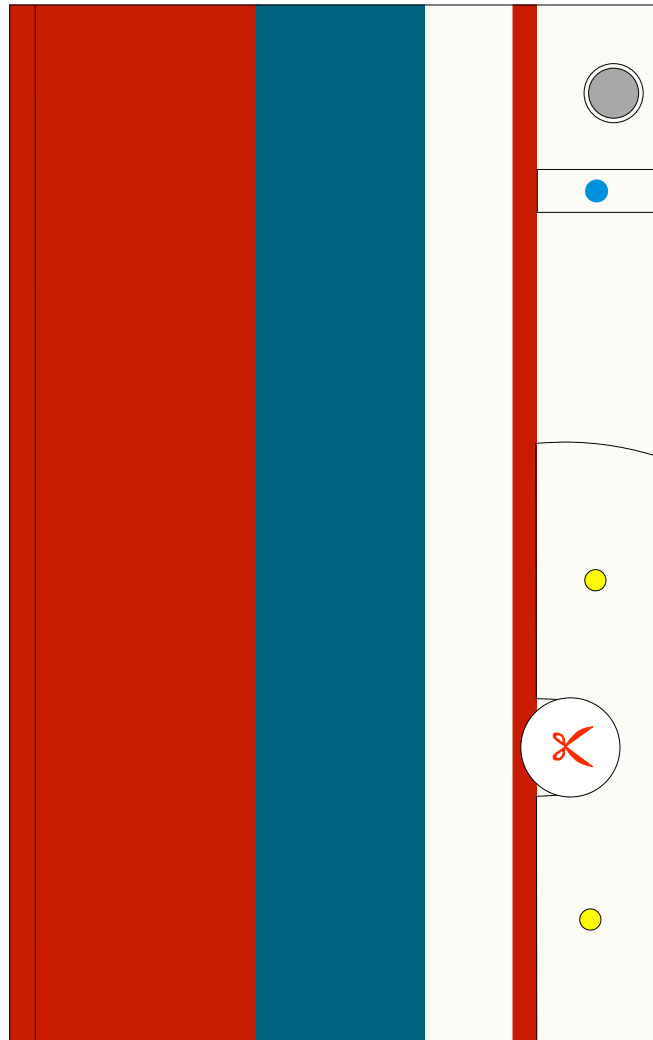
E5



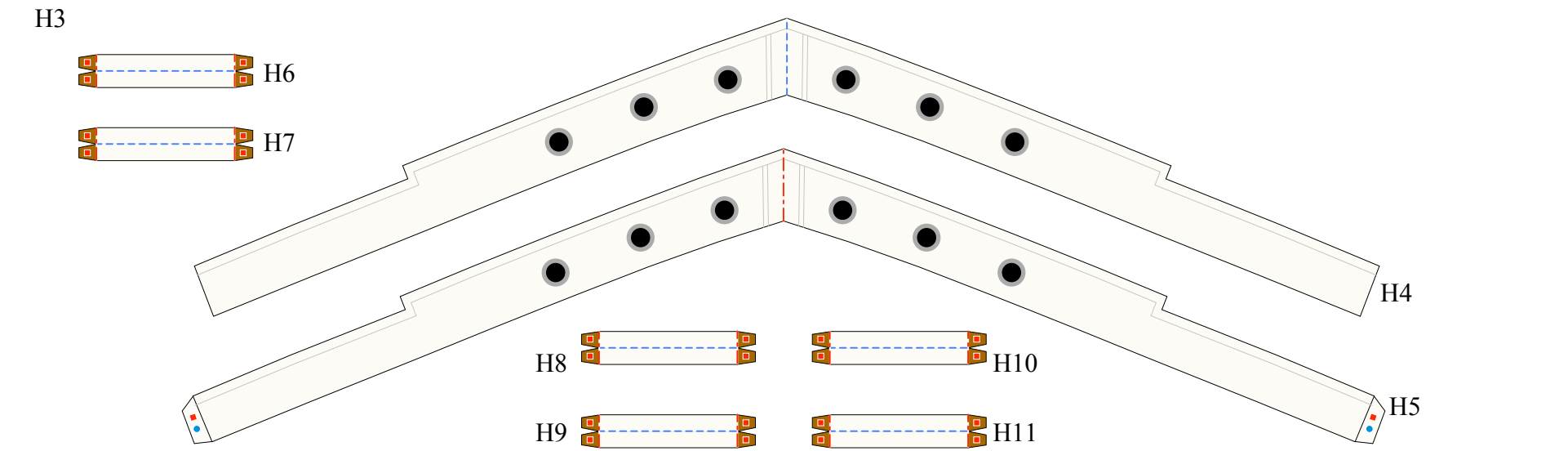
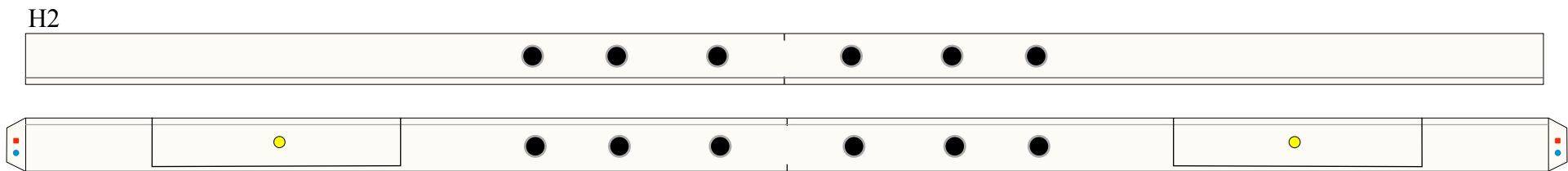
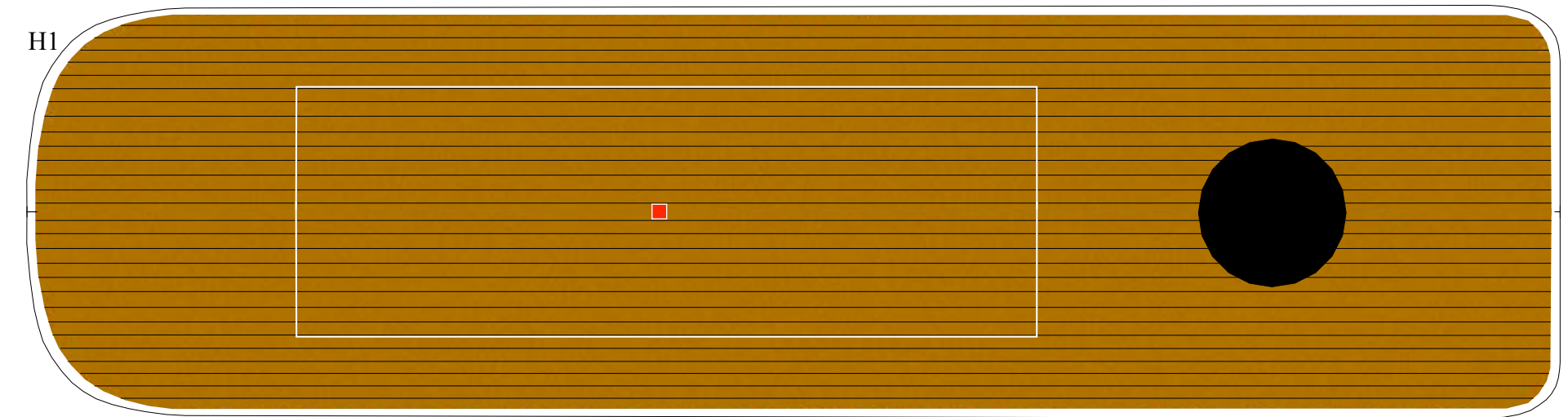
G1

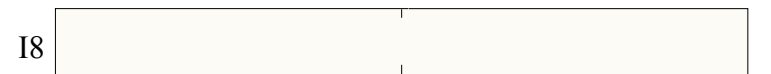
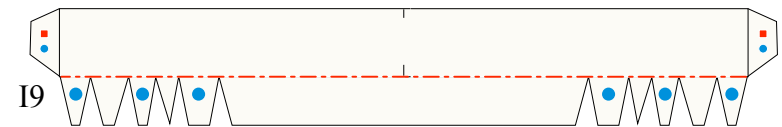
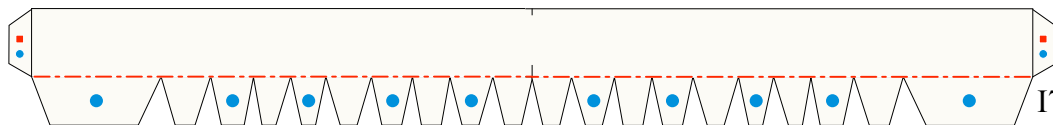
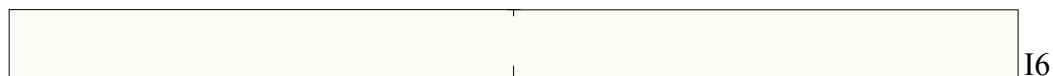
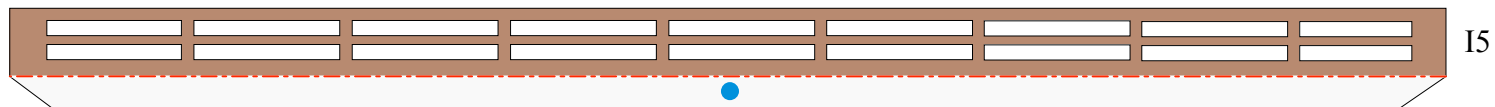
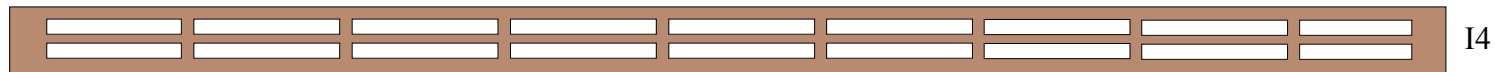
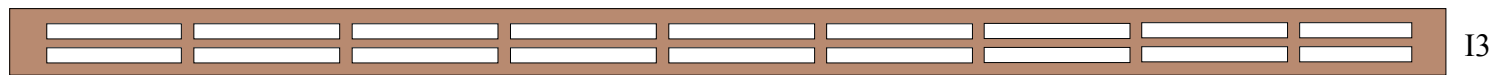
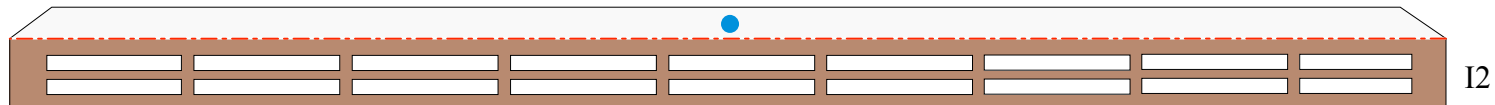
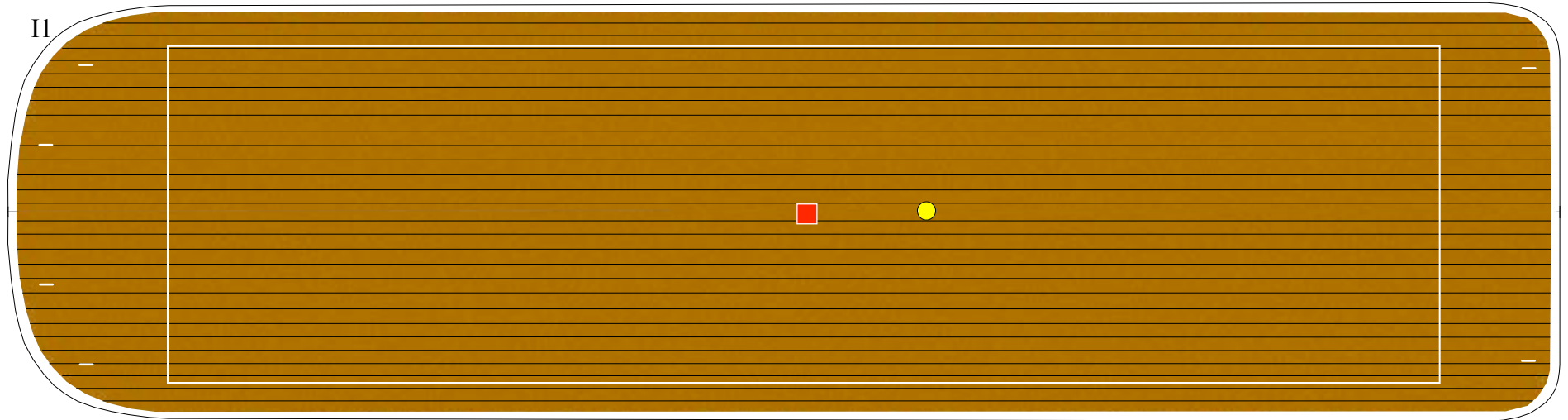


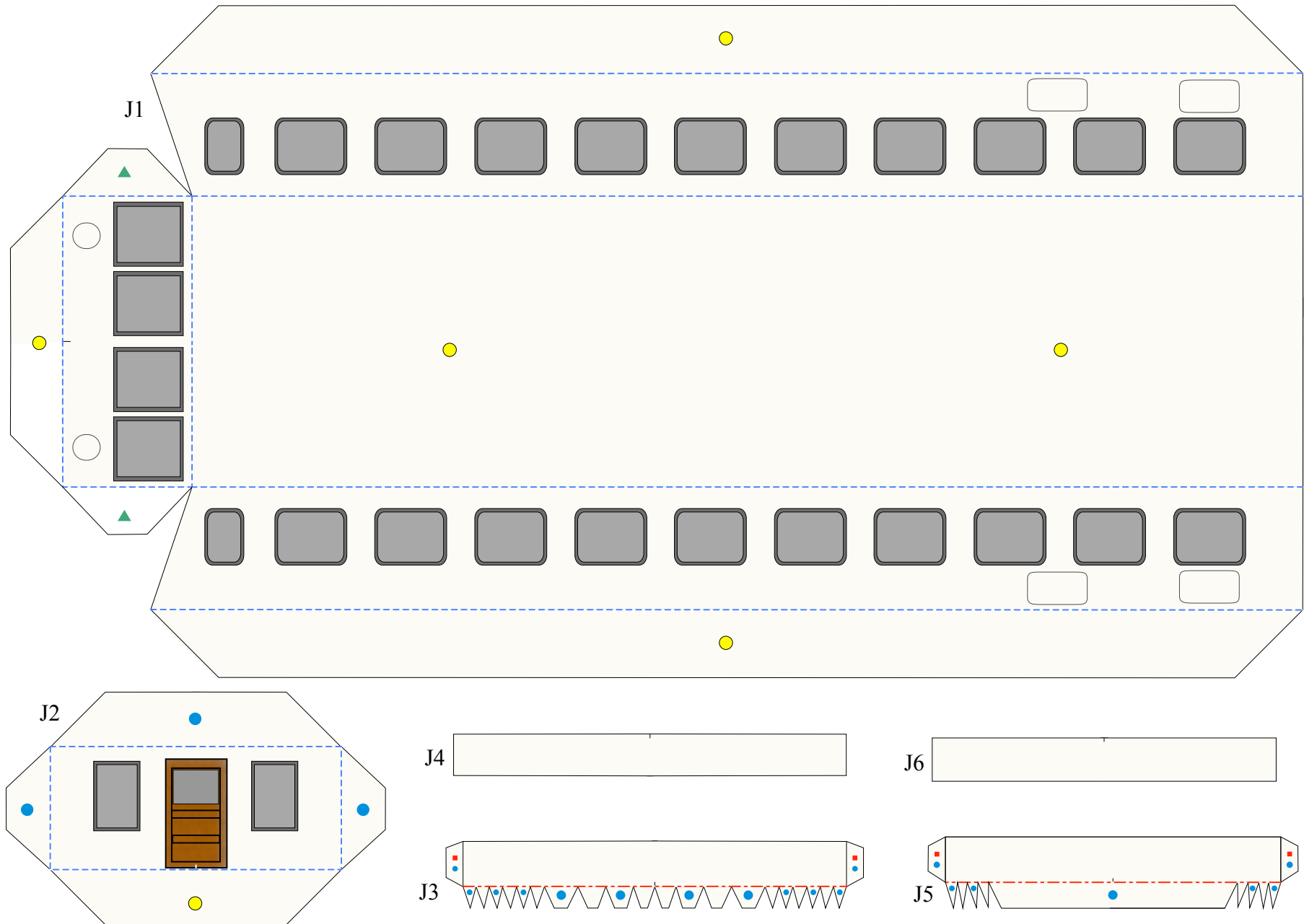
G2

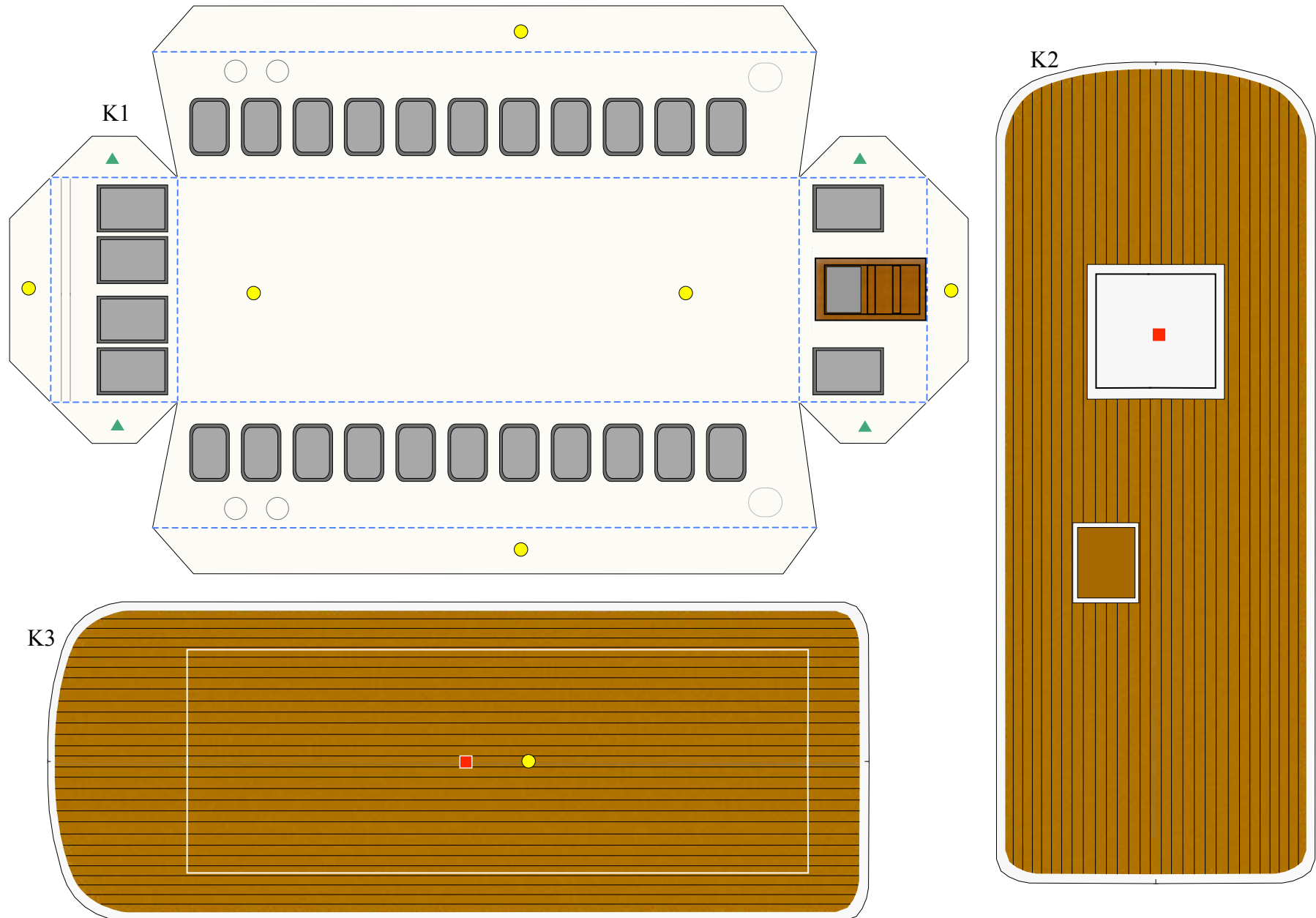


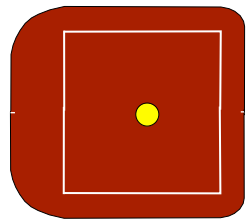
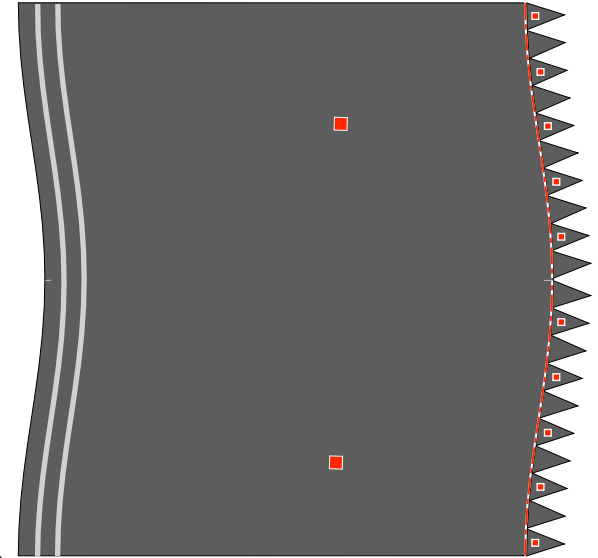
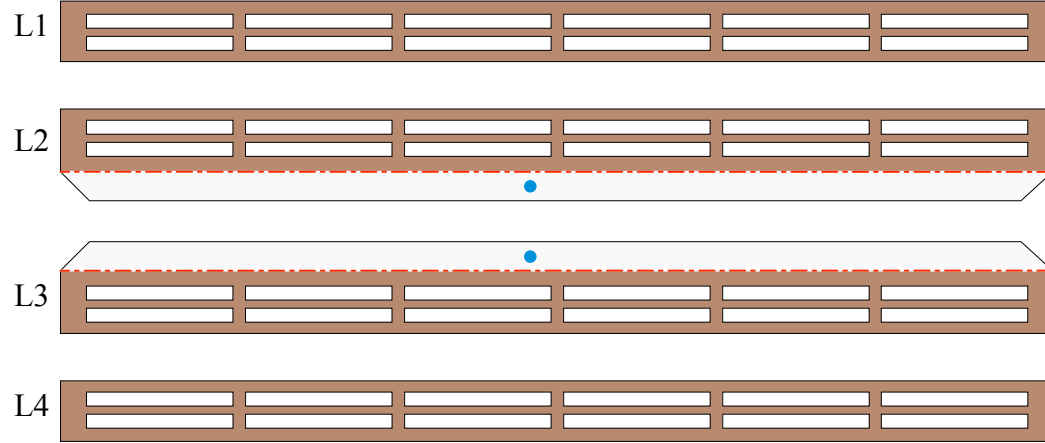




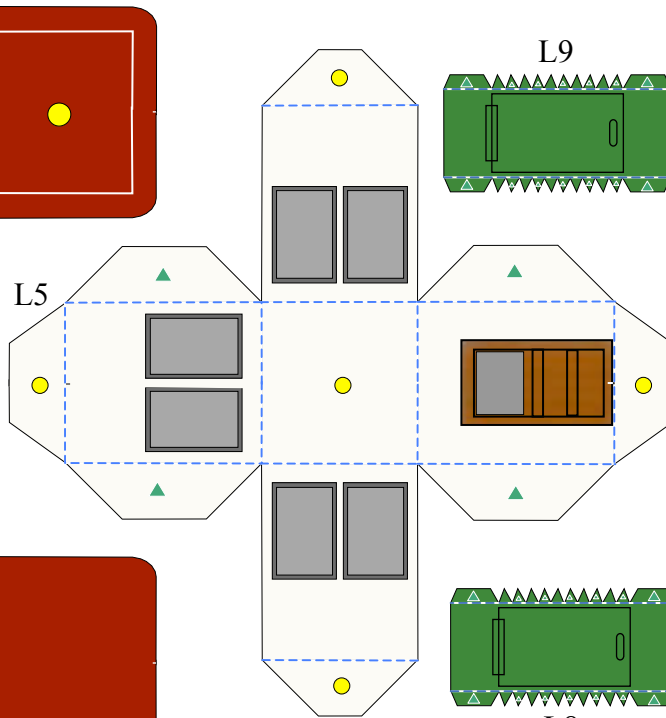






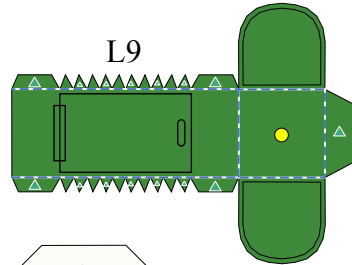
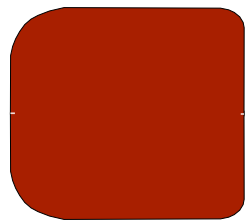


L6

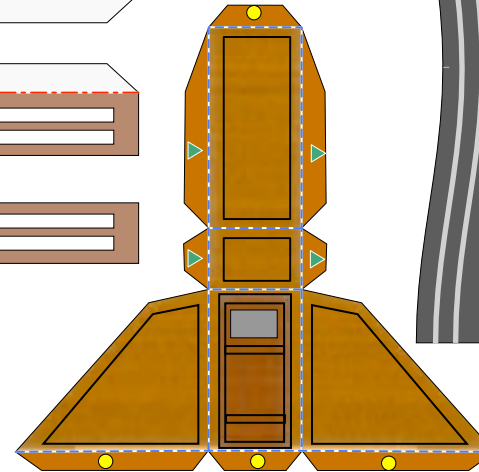


L5

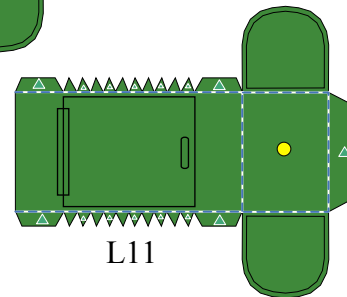
L7



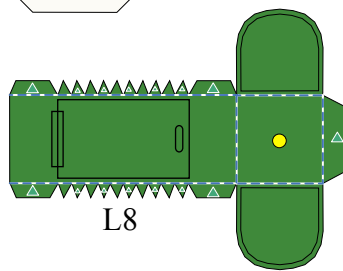
L9



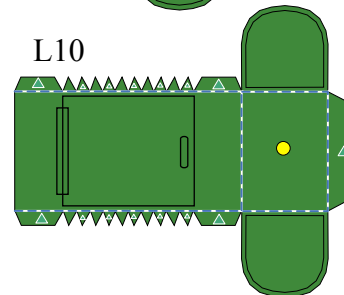
L12



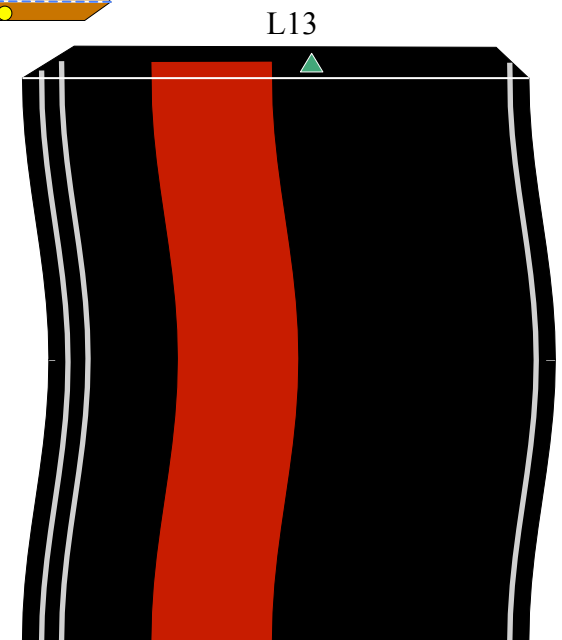
L11



L8

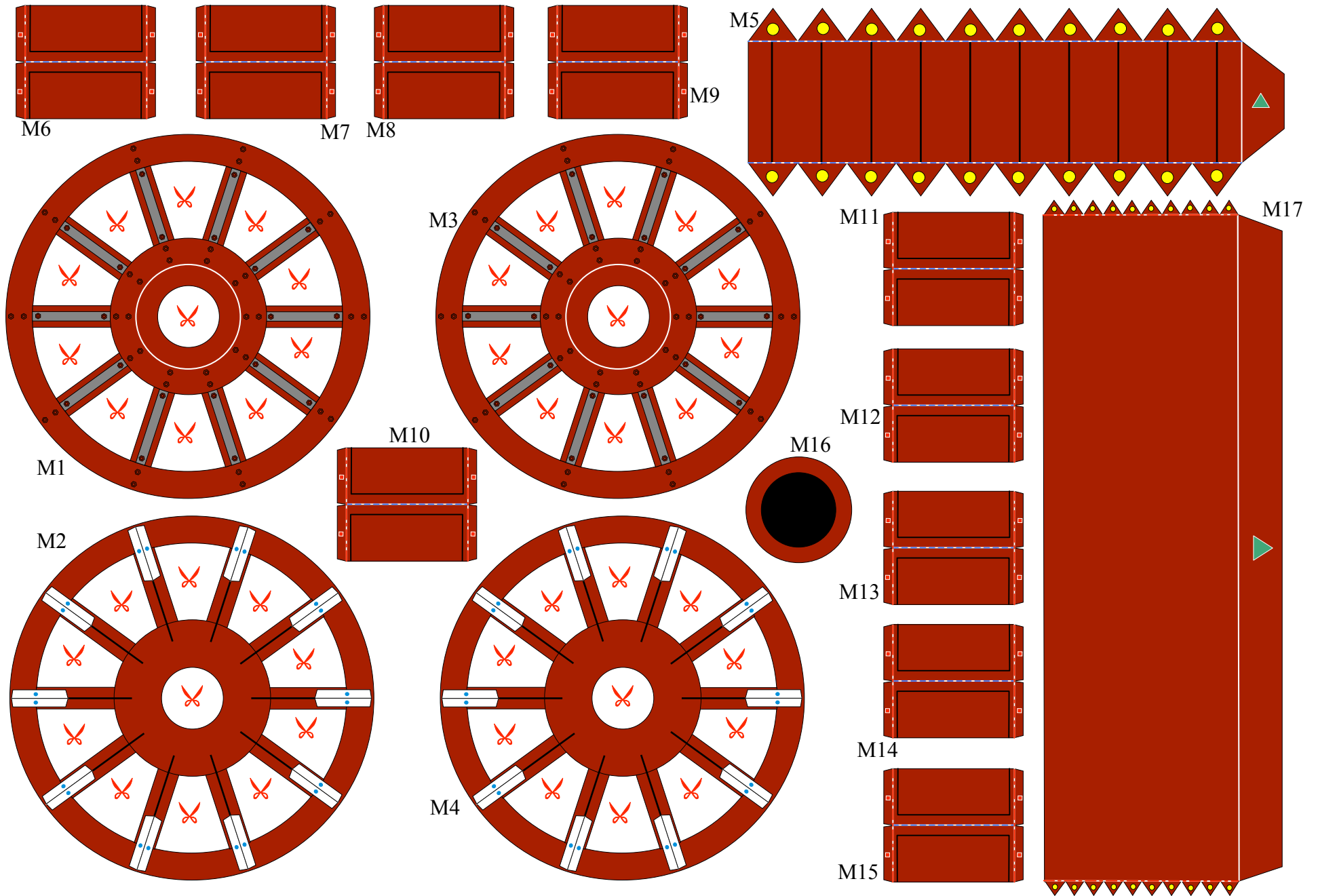


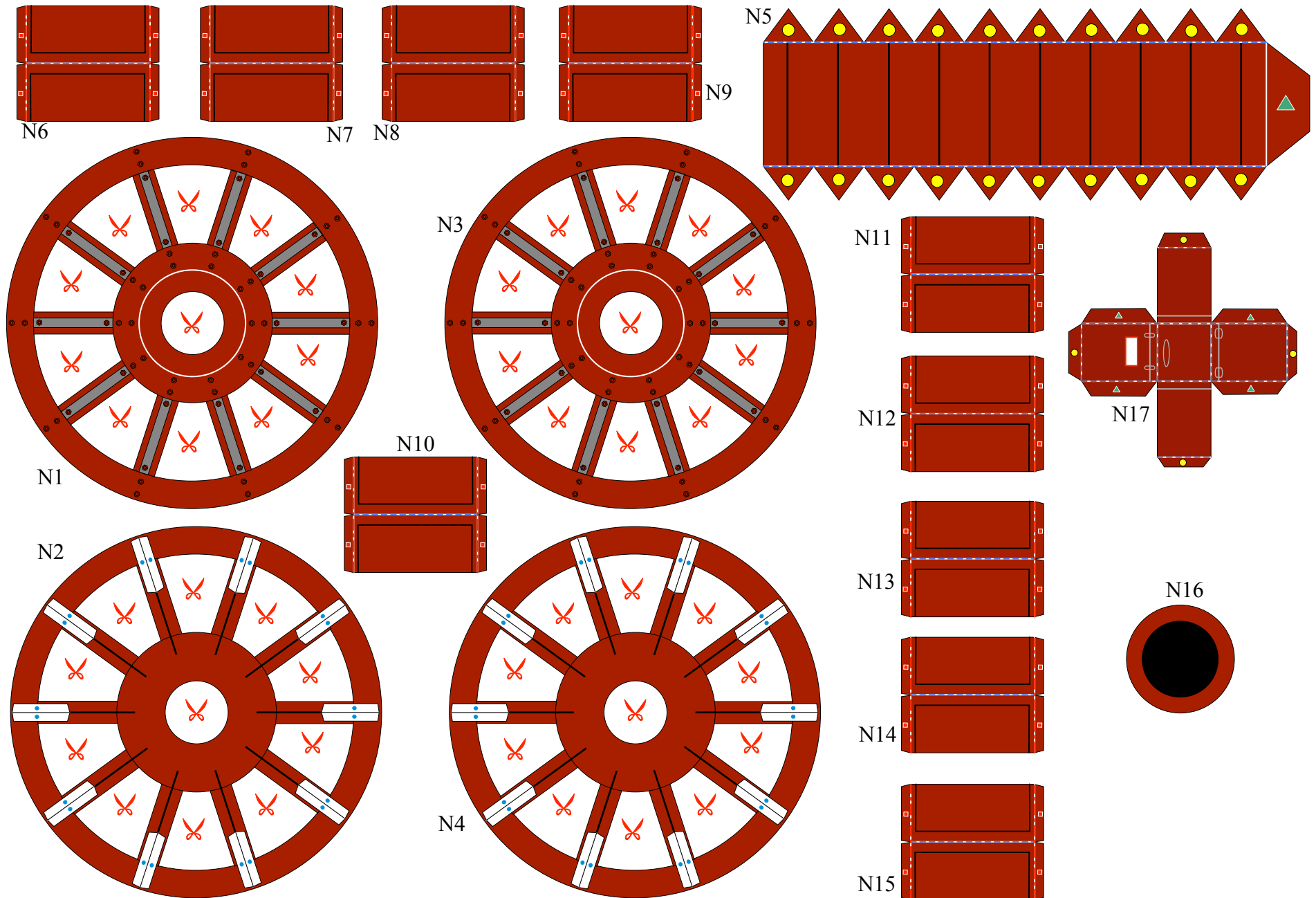
L10

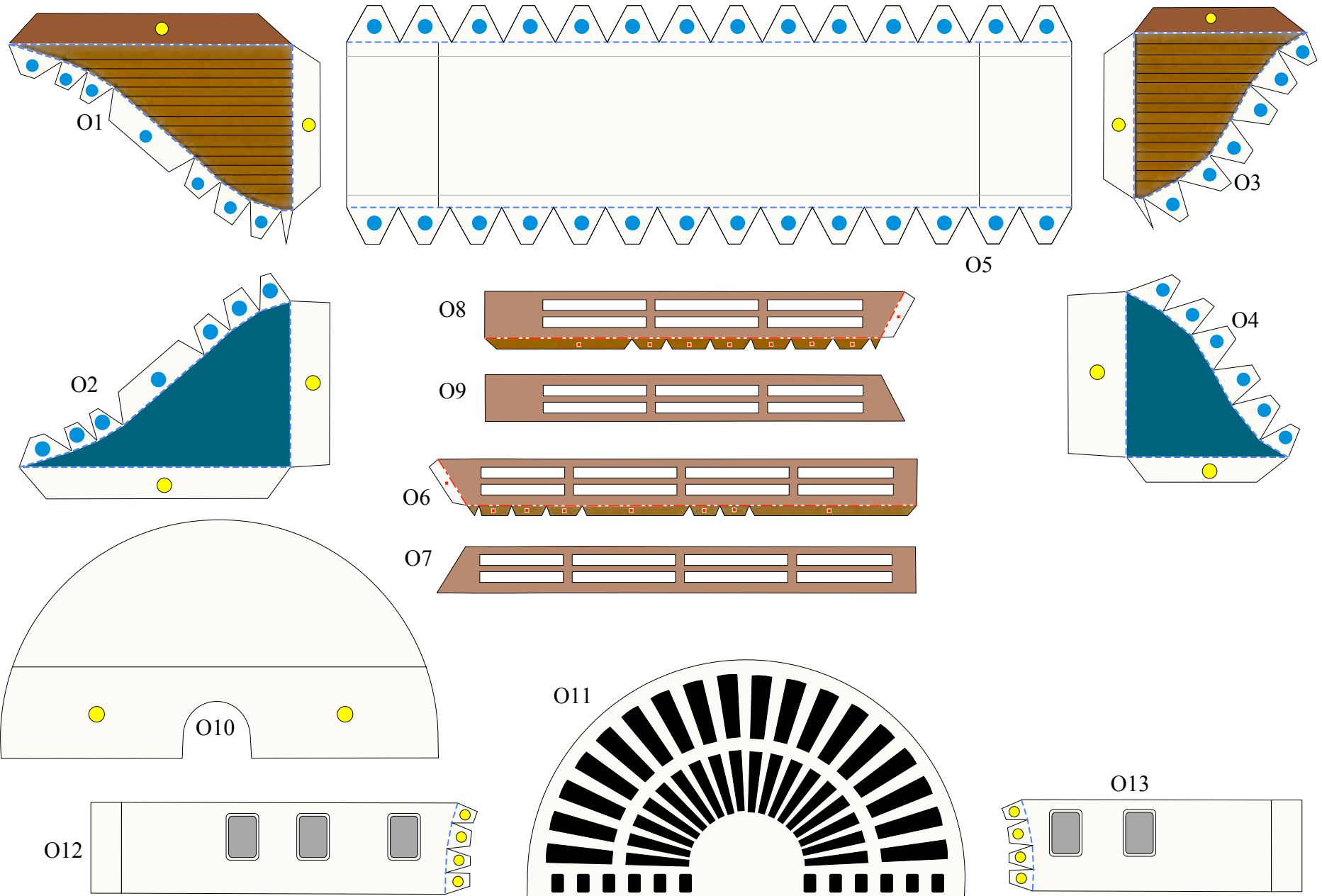


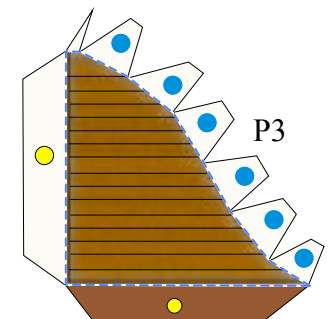
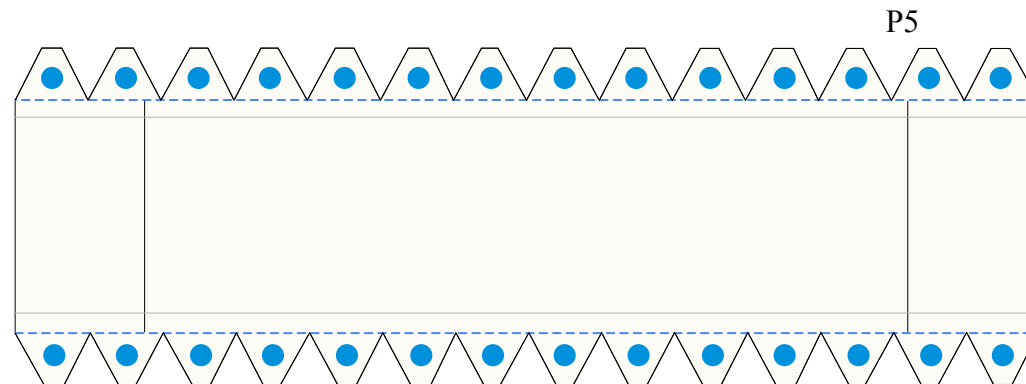
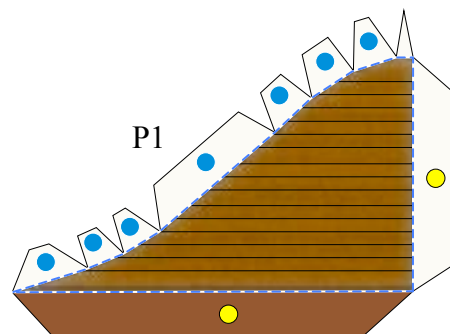
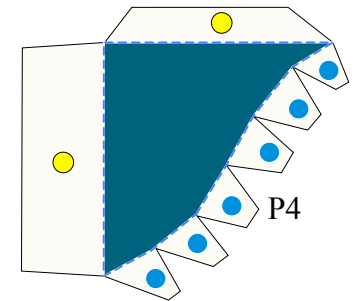
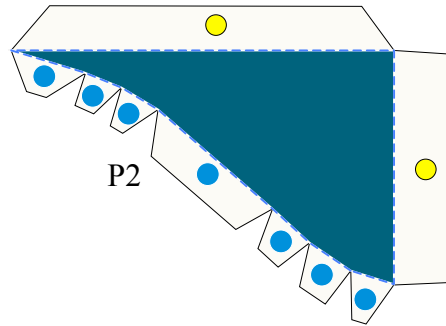
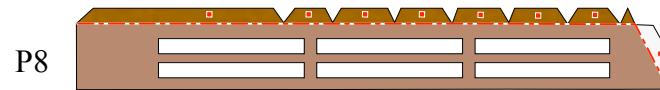
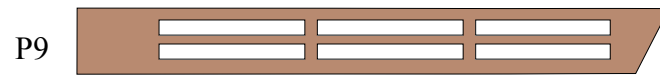
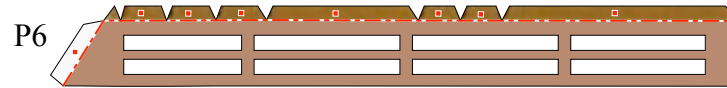
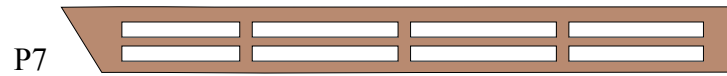
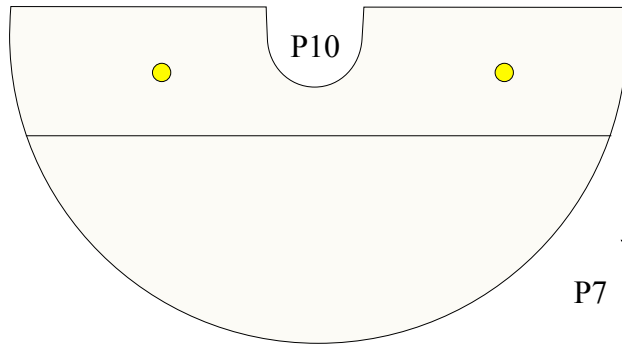
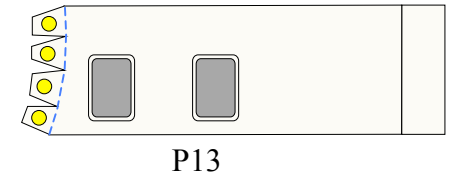
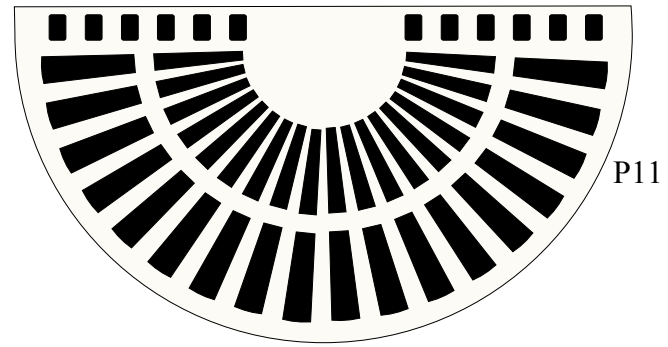
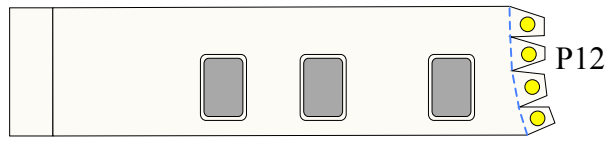
L13

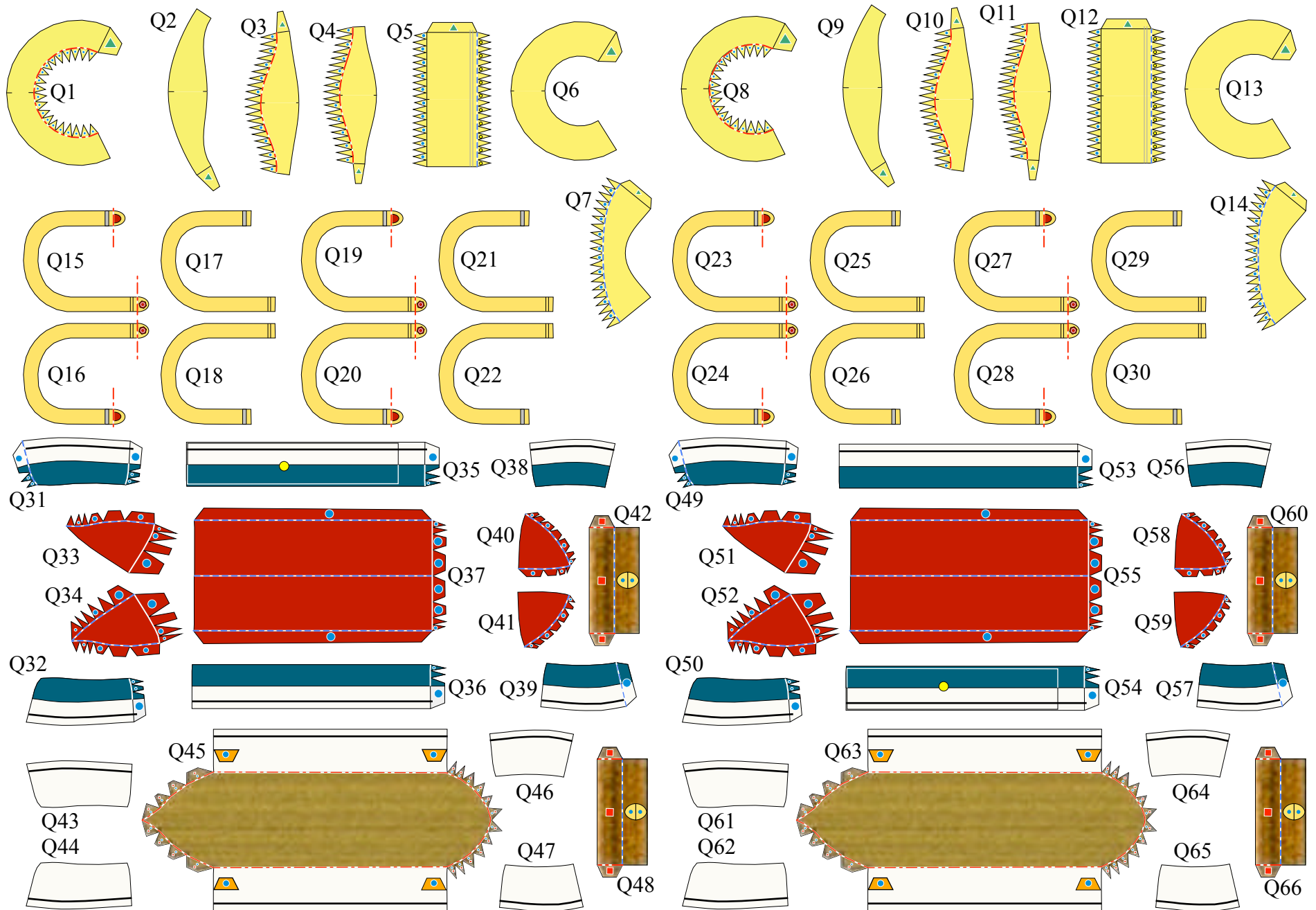




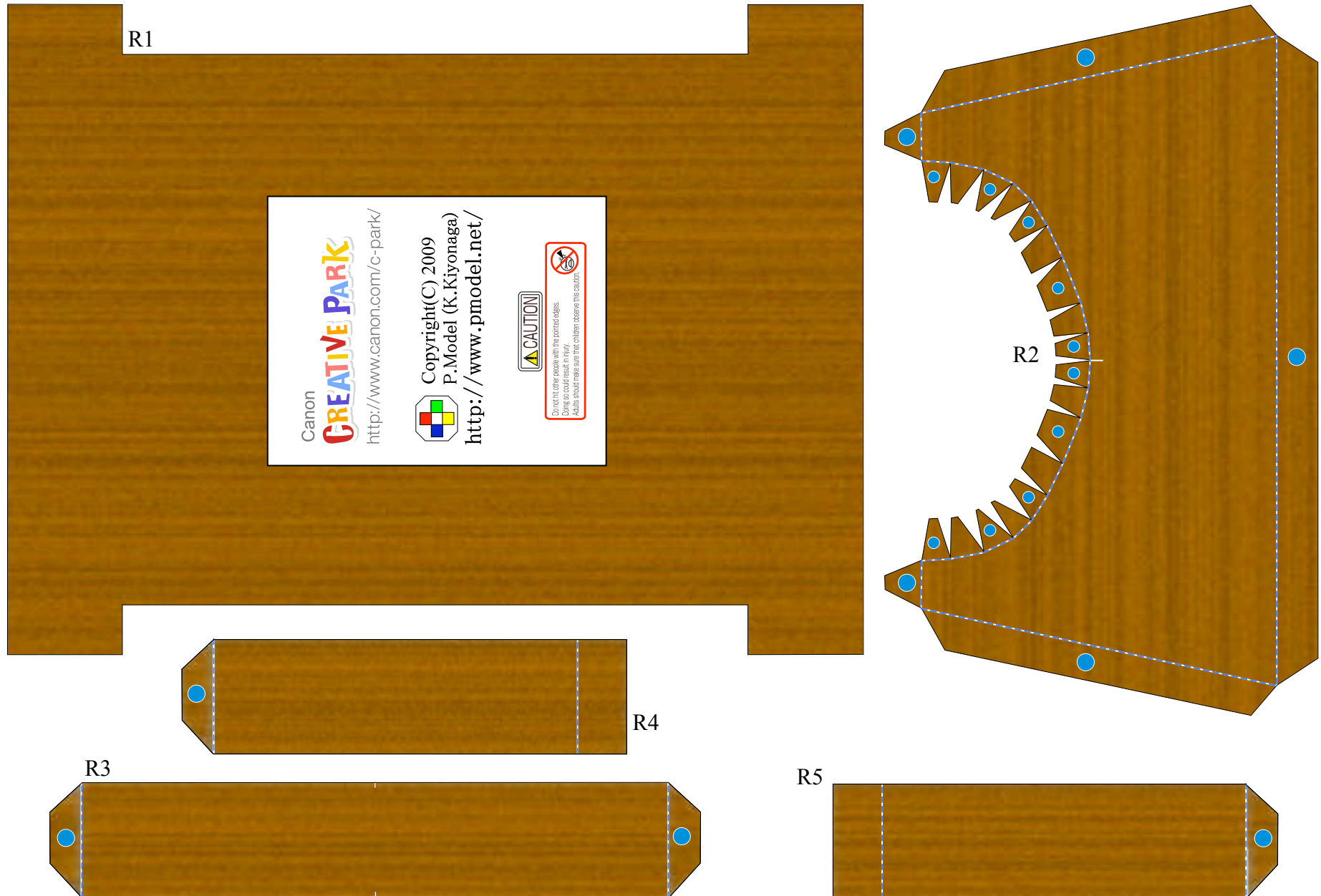












Canon  
**CREATIVE PARK**  
<http://www.canon.com/c-park/>

Copyright(C) 2009  
P.Model (K.Kiyonaga)  
<http://www.pmodel.net/>

**CAUTION!**  
Do not hit other people with the pointed edges.  
Doing so could result in injury.  
Adults should make sure that children observe this caution.

